

ISOMAP & INQUIMAP 3D Surfacing & Ground Water Modelig

Summary

Chapter 1 - Introduction to the ISOMAP family	1
Introduction to the ISOMAP family	1
Chapter 2 - System requirements and program installation	2
System requirements	2
Program installation.....	2
Chapter 3 - The program protection	7
Program registration.....	7
Chapter 4 - How to update the program	8
Procedure for updating the program	8
Autoupdating requirements and troubleshooting	9
Chapter 5 - User Interface	10
Usage Notations.....	10
User Interface and Data Entering.....	10
User Interface: Menu Bar and Menus	10
The Input Dialogue Windows	11
Data Input With Tables.....	12
Message Windows	13
Help On Line	13
Chapter 6 - Open a new project	14
Project Menu	14
New Project Command	14
Open Project Command.....	15
Delete Project Command.....	16
Printer Setup Command.....	16
Chapter 7 - ISOMAP - Grid Generation	17
Operation Grid Generation	17
Weighted Average.....	17
Kriging	17
Method of the Weighted Average of Polynomial Surfaces	18
Procedure.....	18
Edit Menu - Grid Generation	18
Data Points Command.....	19
The "Data Points" Dialogue box.....	19
Gridding Parameters Command	19
The "Gridding Parameters" Dialogue Box.....	20
Example	21
Hidden Mesh Selection Command	21
Calculate Menu - Grid Generation	22
Execute Calculation Command.....	23
Z(X,Y) Calculation Command	23
Volume Calculation Command	23
Print Menu	23

Parameters Command.....	23
The “Graphical Parameters” Dialogue Box.....	23
The <Manual Colour Setting> Button	26
Print Grid Command	27
The Graphical Output Preview Window.....	27
Print Vertical Section Command.....	28
The “Vertical Section Configuration” Dialogue box.....	28
Export in SLK Format Command.....	29
Configure Command.....	29
Exit Menu	29

Chapter 8 - ISOMAP - Slope Map **30**

Slope Map (ISOMAP module).....	30
Procedure.....	30
Edit menu - Slope Map.....	30
Hidden Mesh Selection Command	30
Calculate Menu - Slope Map.....	31
Execute Calculations Command.....	31
Z(X,Y) Calculation Command	31
Volume Calculation Command	31
Print Menu - Slope Map	31

Chapter 9 - ISOMAP - Exposure Map **32**

Exposure Map (ISOMAP module).....	32
Procedure.....	32
Edit menu - Exposure Map.....	32
Hidden Mesh Selection Command	32
Calculate Menu - Exposure Map.....	33
Execute Calculations Command.....	33
Z(X,Y) Calculation Command	33
Volume Calculation Command	33
Print Menu - Exposure Map	33

Chapter 10 - ISOMAP - Grid Difference **34**

Grid Difference (ISOMAP module).....	34
Procedure.....	34
Edit menu - Grid Difference.....	34
Hidden Mesh Selection Command	34
Select Subtrahend Grid Command.....	35
The “Select Subtrahend Grid” Dialogue Box	35
Calculate Menu - Grid Difference.....	35
Execute Calculations Command.....	35
Z(X,Y) Calculation Command	35
Volume Calculation Command	35
Print Menu - Grid Difference	35

Chapter 11 - ISOMAP - Linear Transformation **36**

Linear Transformation (ISOMAP module).....	36
Procedure.....	36
Edit Menu - Linear Transformations.....	36
Hidden Mesh Selection Command	37
Linear Transformation Parameters Command.....	37
The “Linear Transformation Parameters” Dialogue box	37
Calculate Menu - Linear Transformation.....	37
Execute Calculations Command.....	37
Z(X,Y) Calculation Command	37
Volume Calculation Command	38
Print Menu - Linear Transformation	38

Chapter 12 - ISOMAP - Filtering **39**

Filtering (ISOMAP module)	39
Procedure	39
Edit Menu - Filtering	39
Hidden Mesh Selection Command	40
Select Filter Command	40
The "Select Filter" Dialogue box	40
Edit Filter Command	40
Calculate Menu - Filtering	40
Execute Calculations Command	40
Z(X,Y) Calculation Command	40
Volume Calculation Command	41
Print Menu - Filtering	41
Chapter 13 - ISOMAP Menus - Grid Duplication	42
Grid Duplication (ISOMAP module)	42
Procedure	42
Chapter 14 - ISOMAP Menus - DTM Import	43
DTM Import (ISOMAP module)	43
Procedure	43
Chapter 15 - ISOMAP Menus - VID Import	44
Import VID File (ISOMAP module)	44
Procedure	44
Chapter 16 - ISOMAP Menus - XYZ Import	45
Import XYZ file (ISOMAP module)	45
Procedure	45
Chapter 17 - ISOMAP menus - DXF Import	46
Import DXF file (ISOMAP module)	46
Procedure	48
Chapter 18 - ISOMAP menus - ASC Import	49
Import ASC file (ISOMAP module)	49
Procedure	49
Chapter 19 - INQUIMAP	50
Introduction to the module INQUIMAP	50
Chapter 20 - INQUIMAP - Finite Differences	51
Finite Differences (INQUIMAP Module)	51
Edit Menu - Finite Differences	53
Hidden Mesh Selection Command	53
Finite Differences Parameters Command	53
The "Finite differences parameters" Dialogue Box	53
Define Permeability Command	54
Define Boundary Conditions Command	54
Calculate Menu - Finite Differences	55
Execute Calculations Command	56
Z(X,Y) Calculation Command	56
Volume Calculation Command	56
Print Menu - Finite Differences	56
Chapter 21 - INQUIMAP - Superimposition of Effects	57
Superimposition of Effects (INQUIMAP Module)	57
Edit Menu - Superimposition of Effects	57

Hidden Mesh Selection Command	57
Wells for Superimposition of Effects Command.....	58
The "Aquifer type" Dialogue Box.....	58
Free aquifers	58
Semi-confined aquifer	59
Confined aquifer (stationary flow - Jacob method)	60
Confined aquifer (transitory flow - Theis method).....	61
Calculate Menu - Superimposition Effects	62
Execute Calculations Command.....	62
Z(X,Y) Calculation Command	63
Volume Calculation Command	63
Print Menu – Superimposition Effects	63

Chapter 22 - INQUIMAP - Trace Isochrones 64

Draw Isochrones (INQUIMAP Module)	64
Edit Menu - Trace Isochrones	64
Hidden Mesh Selection Command	64
Define Permeability Command	65
Position Isochrones Wells Command	65
The "Positioning of wells" Dialog Box	65
Isochrone Calculation Parameters Command	65
The "Isochrone Calculation Parameters" Dialogue Box	65
Calculate Menu - Trace Isochrones	66
Execute Calculations Command.....	66
Z(X,Y) Calculation Command	66
Volume Calculation Command	67
Print Menu - Trace Isochrones.....	67

Chapter 23 - INQUIMAP - Calculation Concentrations 68

Calculation Concentration (INQUIMAP Module).....	68
Edit Menu - Calculation Concentrations.....	68
Hidden Mesh Selection Command	69
Define Permeability Command	69
Concentrations Calculation Command	69
The "Iso-concentration parameters" Dialogue Box.....	69
Calculate Menu - Calculation Concentrations.....	70
Execute Calculations Command.....	70
Z(X,Y) Calculation Command	70
Volume Calculation Command	70
Print Menu - Calculation Concentrations.....	70

Chapter 1 - Introduction to the ISOMAP family

Introduction to the ISOMAP family

The ISOMAP family is an integrated software package that allows one to create a digital terrain model (DTM) that can be used for further elaborations, such as rockfall analysis and groundwater modelling.

The **ISOMAP** module allows one to create a grid from a set of spot points, and to produce maps, wireframe views, or solid views. It allows different calculations, such as slope mapping, exposure mapping, or filtering.

The **INQIMAP** module is dedicated to groundwater modelling. It leads to calculations from those based on simple analytical solutions to those that incorporate advanced and complex numerical techniques.

The **ROTOMAP** module is dedicated to 3D rockfall analysis, and allows the complete design of rockfall protective systems. It features true 3D modelling and many other options for model calibration and barrier design.

The "Introduction to the ROTOMAP module" and the subsequent chapters are not included in the present version of the manual.

The ISOMAP family is a comprehensive package: it can directly produce high-quality graphic outputs, or export them to DXF or EMF formats, which preserve the vectorial quality of the printouts, even when the files are imported into external editors such as Microsoft Word or Corel Draw.

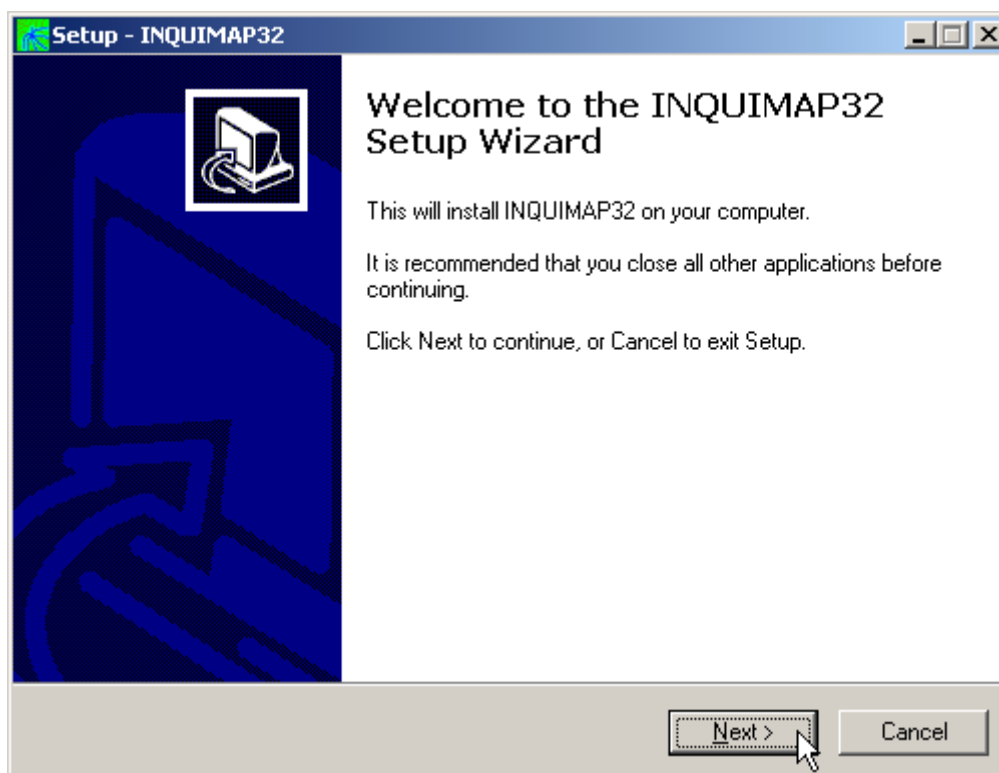
Chapter 2 - System requirements and program installation

System requirements

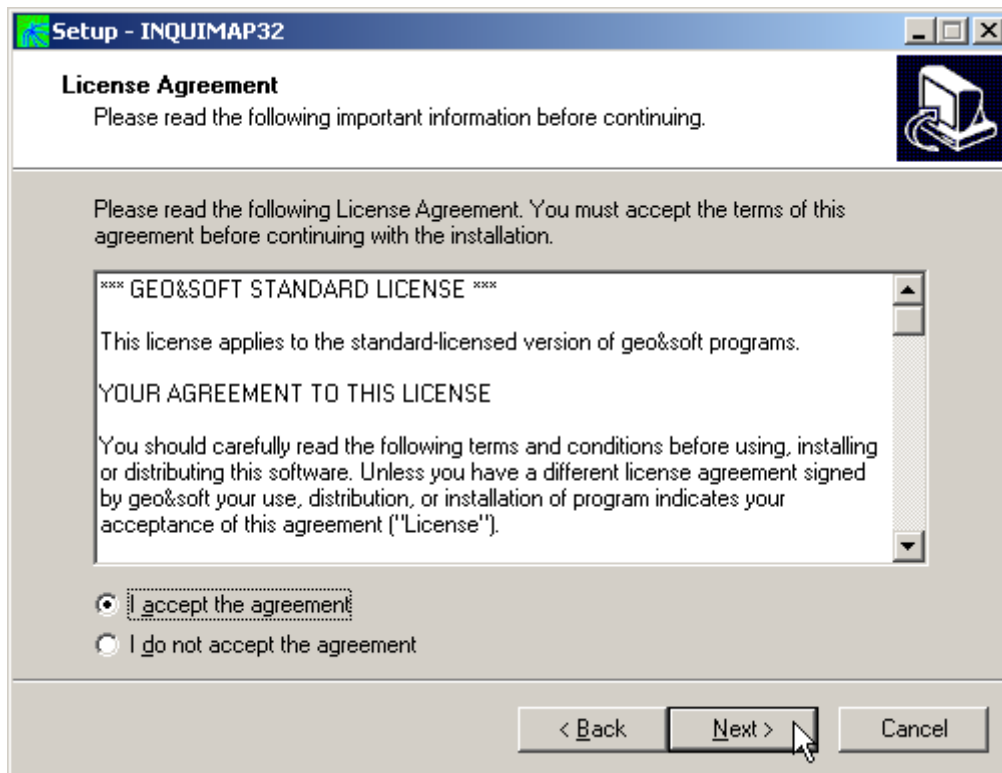
- Pentium® class processor
- Microsoft® Windows® 95 OSR 2.0, Windows 98, Windows Me, Windows NT®* 4.0 with Service Pack 5 or 6, Windows 2000, or Windows XP
- 64 MB of RAM (128 MB recommended)
- 100 MB of available hard-disk space
- CD-ROM drive
- A printer driver **must** be installed, even if the printer itself is not connected to the PC.

Program installation

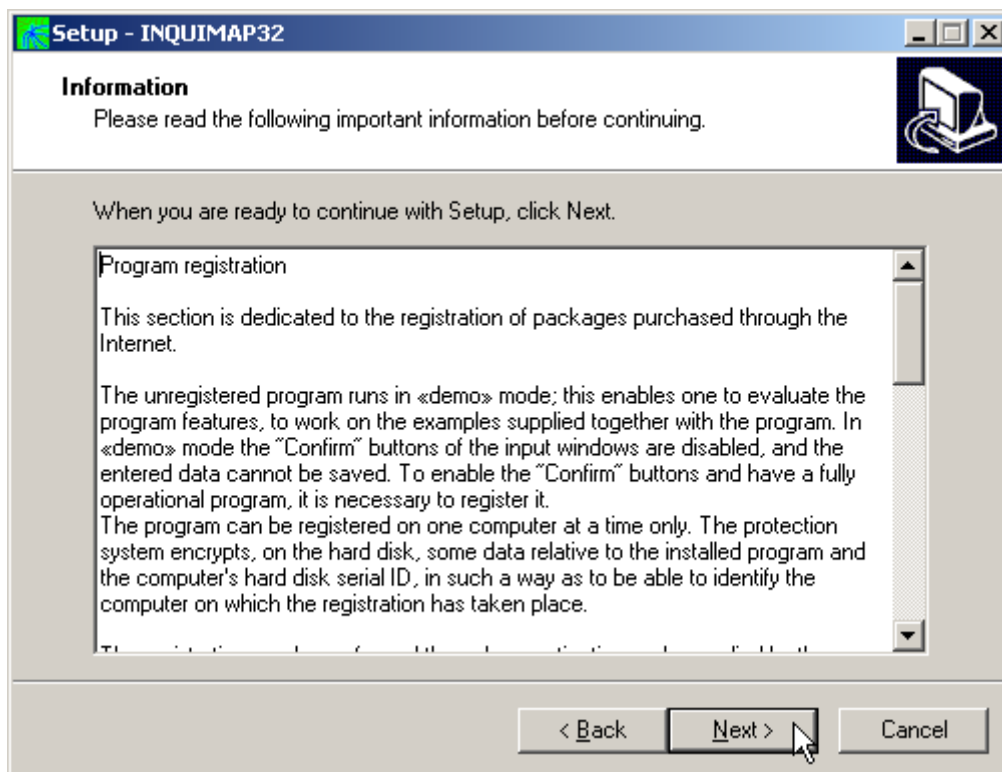
To install the INQUIMAP program, run **INQUIMAP32SETUP.EXE** from the CD-ROM or from the folder where you downloaded and saved the setup program.



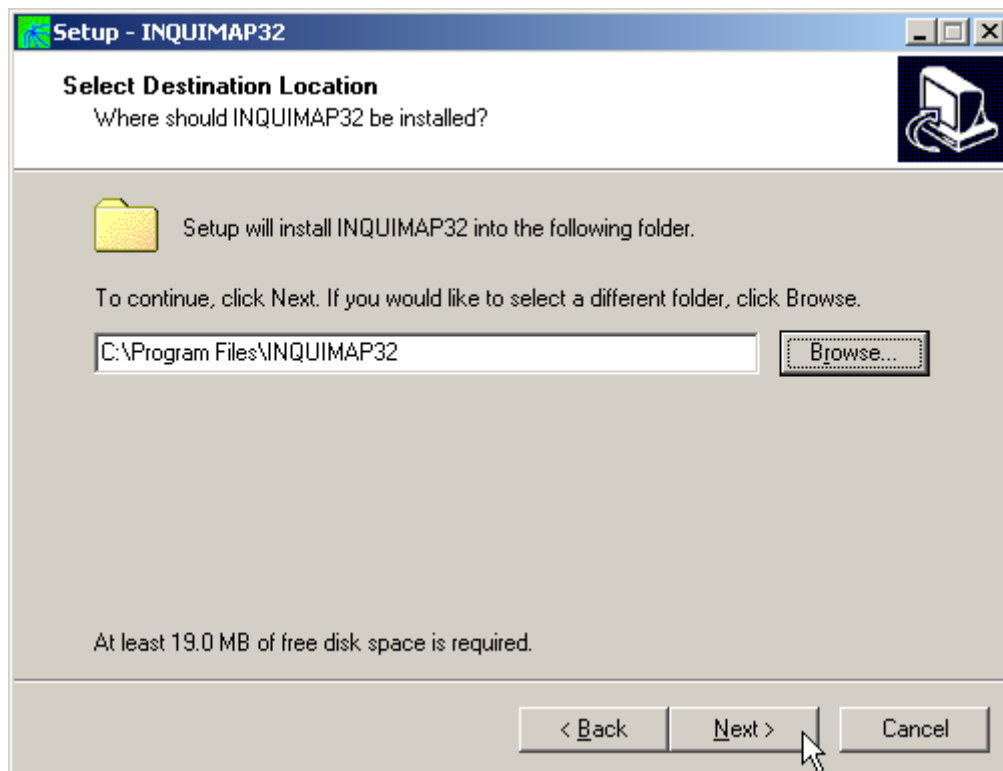
Press the **NEXT** button to start the installation.



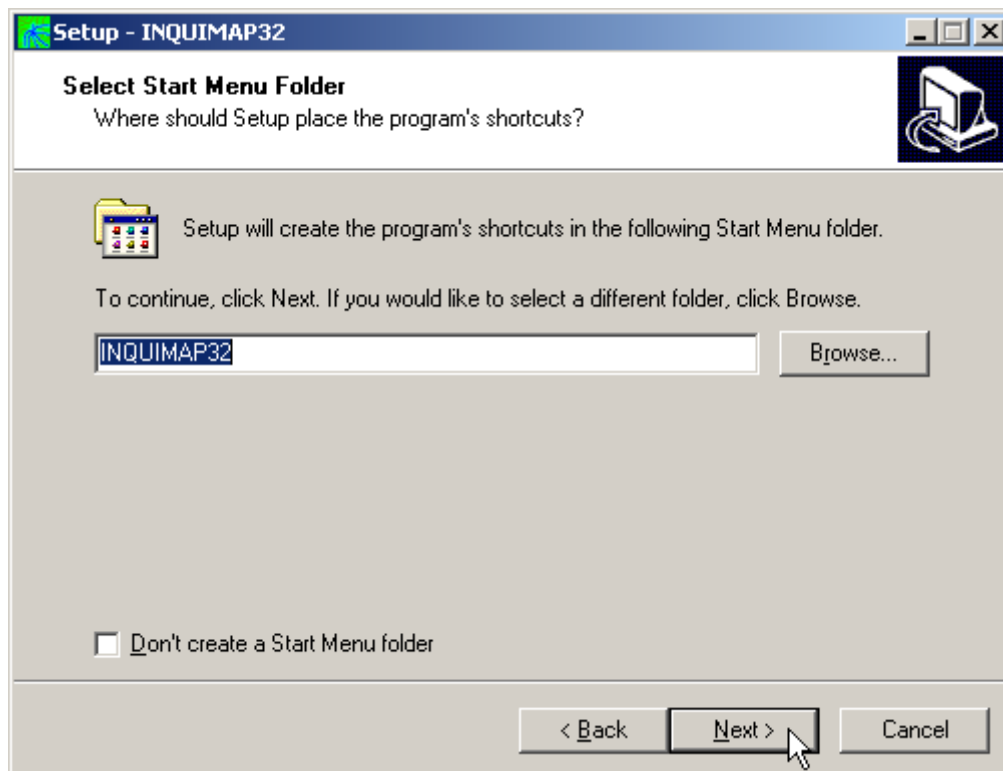
Carefully read the License Agreement and press the **NEXT** button.



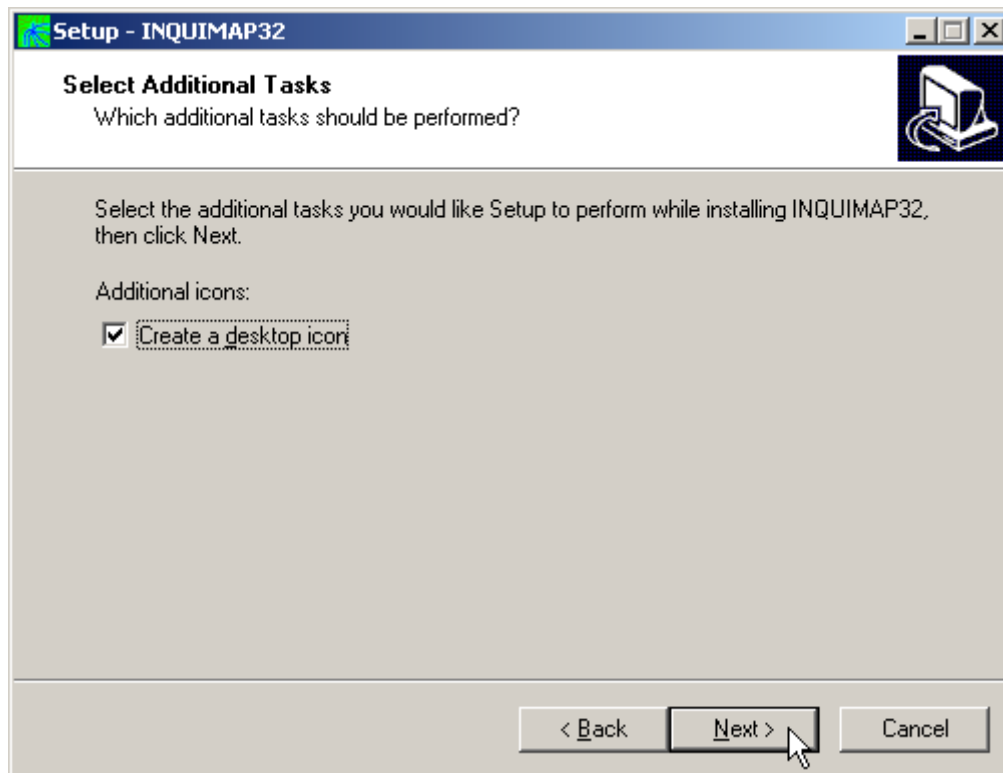
Carefully read the informations about the registration of the software and press the **NEXT** button.



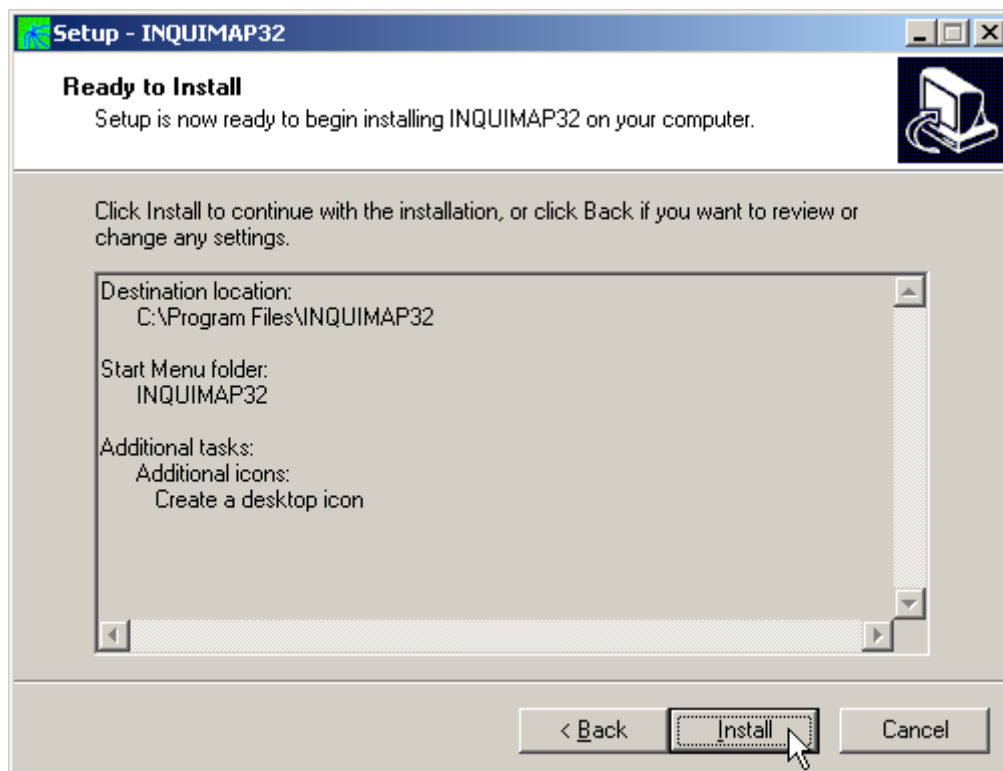
Select the folder where the **INQUIMAP32** directory would be created and press the **NEXT** button.



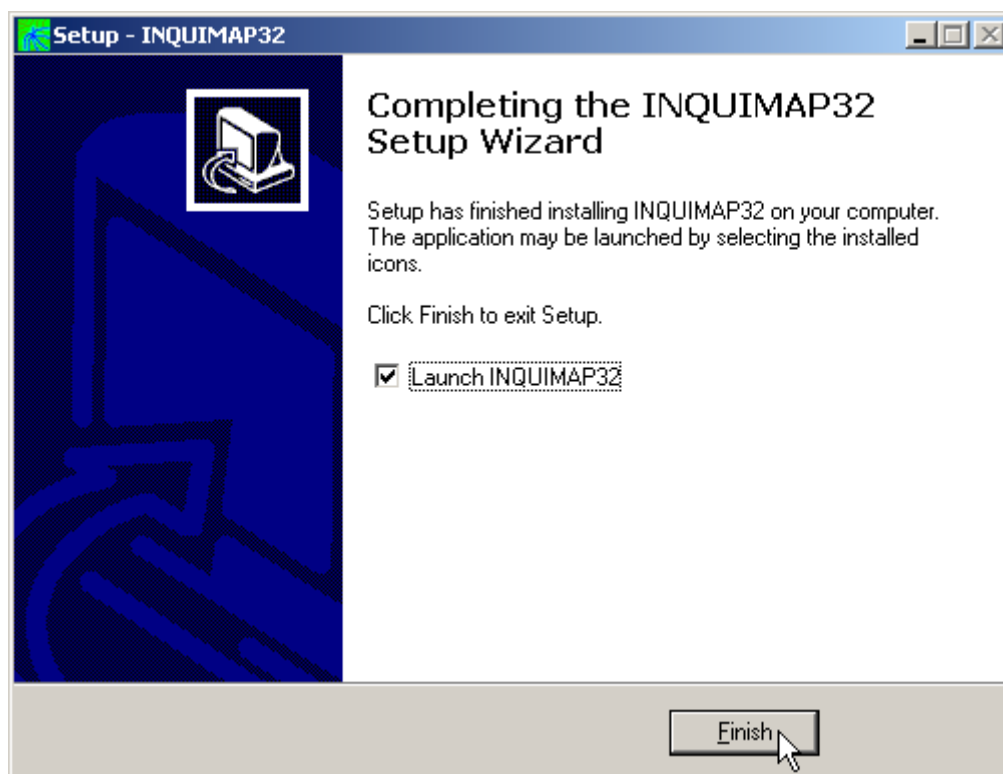
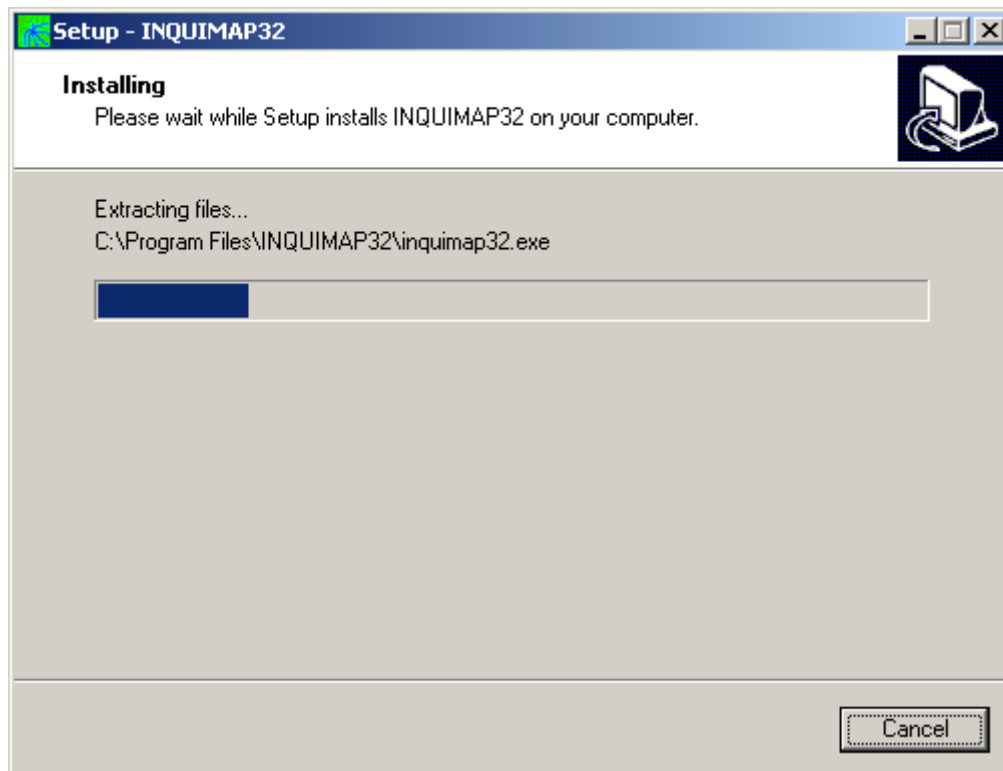
Press the **NEXT** button to create the **INQUIMAP32** group in the Start menu.



Choose if you want an icon to be created on your desktop, or not.



Press the **INSTALL** button to continue the installation procedure ...



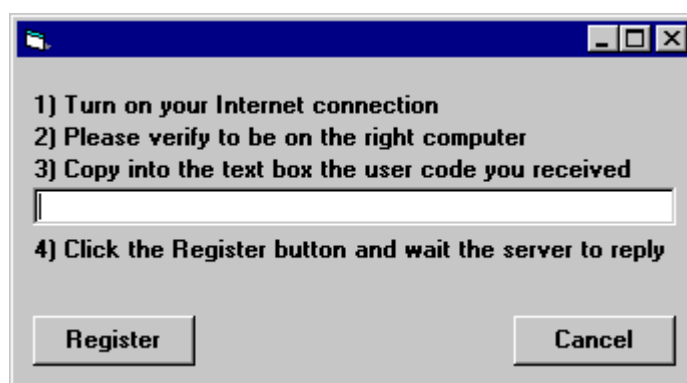
Once completed the installation, press the **END** button to exit the setup procedure and to start **INQUIMAP32**.

INQUIMAP32 can be run by clicking the **Start** button, then selecting the **INQUIMAP32** group in the **Programs** menu, and clicking **INQUIMAP32**.

Chapter 3 - The program protection

Program registration

This section is dedicated to the registration of packages purchased through the Internet.



The unregistered program runs in «demo» mode; this enables one to evaluate the program features, working on the examples supplied together with the program. In «demo» mode the «Confirm» buttons of the input windows are disabled, and the entered data cannot be saved. To enable the «Confirm» buttons, and have a fully operational program, it is necessary to register it.

The program can be registered on one computer only at a time. The protection system encrypts, on the hard disk, some data relative to the installed program and to the computer hard disk serial ID, in such a way as to be able to identify the computer on which the registration has taken place.

The registration can be performed, by the manufacturer or supplier, with an **activation code**.

We would like to stress that the encrypted protection data on the hard disk are bound in a unique way to the hard disk itself: subsequently, one can no longer use the activation code to install the program on other computers.

Let us describe the procedure for the registration of the software:

1. select the **Registration** command from the Help menu.
2. turn on your Internet connection
3. copy into the box the activation code you received
4. click the <Registration> button and wait the server to replay

Chapter 4 - How to update the program

Procedure for updating the program

We believe that the best advertising is a client who shows to the colleagues a state-of-the-art product, so we have always made available the free updates of our packages.

Now a new service is available for free: **AutoUpdater** automatically searches and downloads the new components from our web site **www.geoandsoft.com**, saving the older versions in a backup folder.

If you prefer, you still can download the updated full setup from our web site, of course.

To download the updated components with AutoUpdater, follow this procedure:



1. Start the program
2. Click the "**Update**" button at the bottom of the first window.
3. Wait for the program to verify if some updated component is available on our servers. If the program finds new components, it shows the list: each component has a check box which allows to choose if a single component has to be downloaded, or not. AutoUpdater automatically checks the boxes of the components whose download is suggested, and leaves unchecked the files which could have been modified by the user, like the colour configuration files.
4. Select the files you want to download and click the "**Update**" button.
5. Once the files have been installed, AutoUpdater runs the updated program.

AutoUpdater can also be configured to automatically start at each run of the program. Simply check the “update at startup” check box, and AutoUpdater will automatically search for new components each time the program is run.



Autoupdating requirements and troubleshooting

The autoupdating procedure requires an active Internet connection.

The search for new components is directly performed by the program, while the download is performed by AutoUpdater: for this reason, both the main program and AutoUpdater need the right to access to the Internet.

All the autoupdating procedures use the HTTP protocol, port 80, and automatically recognize if a proxy server is used on the local network to access the Internet.

If you experience some problems with the autoupdating procedure, they may be due to a FIREWALL: ask your System Administrator to give the right to access the Internet to the executable of the program (*32.exe) and to the AutoUpdater.exe module, in the program folder. No “act as a server” right is needed.

If particularly hard security rules disallow giving those access rights, remember you can download the updated full setup, from our web site, through your web browser.

Chapter 5 - User Interface

Usage Notations

Some typographical notations and keyboard formats are used in this manual to help locate and interpret information more easily.

Bold print is used to indicate command names and related options. Characters appearing in bold print should be typed exactly as printed, including spaces.

Words written in *italics* indicate a request for information.

CAPITAL letters are used to indicate computer, printer, directory, and file names.

User Interface and Data Entering

The user interface is designed to be easy to use and powerful and is supported by complete on-line help. This help contains practical hints and the theoretical background, where applicable. It should reduce the requirement of frequently consulting the printed manuals.

All the commands are located inside a menu bar. Each menu contains a list of commands that one can select with the mouse or the keyboard. The arrangement of the menus, designed with ergonomic criteria, follows the logical order of the operations, inhibiting the access to further operations until all the necessary data have been entered.

The interface layout is maintained in all of our programs, to simplify, as much as possible, the transition from one program to another to avoid having to learn different commands and procedures for similar functions (such as entering data or managing files).

Let us examine the general components that are available in the user interface of geo&soft programs.

User Interface: Menu Bar and Menus

The Menu Bar manages the access to all the program commands. The goal of the menu design is to offer an ergonomic, simple, and understandable arrangement of the commands.

The menus used to perform a complete operation are normally ordered left to right and top to bottom. When possible, the following scheme is used: definition of the name of the project, entering the required data, performing the calculation, and generating the output as a preview or final print.



The programs automatically disable some menus or commands when the execution of such menus or

commands is not yet feasible. Typical examples are: a calculation menu is disabled when not all the data needed for the calculation have been completely entered, or a print menu is disabled if not all the calculations have been executed.

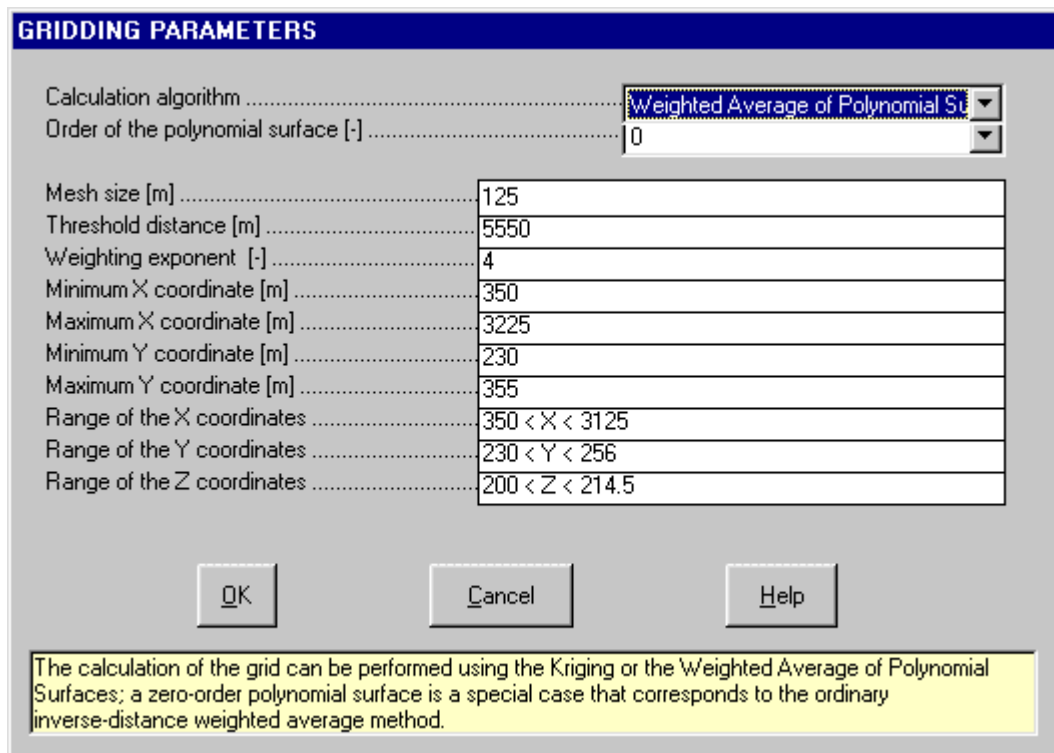
To choose a command from a menu, use the following procedures:

- ☞ Point the menu that is to be activated, click the left button of the mouse, then point the command to be activated, and click the left button of the mouse again. If one does not wish to select any command from the menu that is open, exit the area of the menu before releasing the mouse button.

The Input Dialogue Windows

The different menu commands can perform an immediate action, or display a dialogue window in order to input or edit the various data sets.

When a dialogue window is visible, all the actions that do not pertain to it are ignored. Hence, it is necessary to close the dialogue window to resume the normal use of the program.



GRIDDING PARAMETERS	
Calculation algorithm	Weighted Average of Polynomial St
Order of the polynomial surface [-]	0
Mesh size [m]	125
Threshold distance [m]	5550
Weighting exponent [-]	4
Minimum X coordinate [m]	350
Maximum X coordinate [m]	3225
Minimum Y coordinate [m]	230
Maximum Y coordinate [m]	355
Range of the X coordinates	350 < X < 3125
Range of the Y coordinates	230 < Y < 256
Range of the Z coordinates	200 < Z < 214.5

OK Cancel Help

The calculation of the grid can be performed using the Kriging or the Weighted Average of Polynomial Surfaces; a zero-order polynomial surface is a special case that corresponds to the ordinary inverse-distance weighted average method.

Some fundamental tools are used inside the dialogue windows: data fields such as text and list boxes, and buttons.

The text boxes are used to input numerical values and text strings. Most of the editing keys (HOME, END, INS, DEL, etc.) can be used inside these fields. If one sees a small arrow pointing down on the right side of the data field, one has a list box.

To scroll the list box and select an item, do as follows:

- ☞ click the arrow, and then click the item to be selected.

There are three buttons in the dialogue window:

- <Ok> - this button saves the entered information and goes on to the next phase.
- <Cancel> - this button closes the Dialogue window without saving the just entered data, or without executing the command.
- <Help> - this opens a window that contains general information on how to use the dialogue windows.

To use the buttons:

- ☞ click the button

To edit the data inside the dialogue window, use the following keys:

- TAB - moves the cursor to the next field; when the cursor is inside the last visible field the cursor goes to the

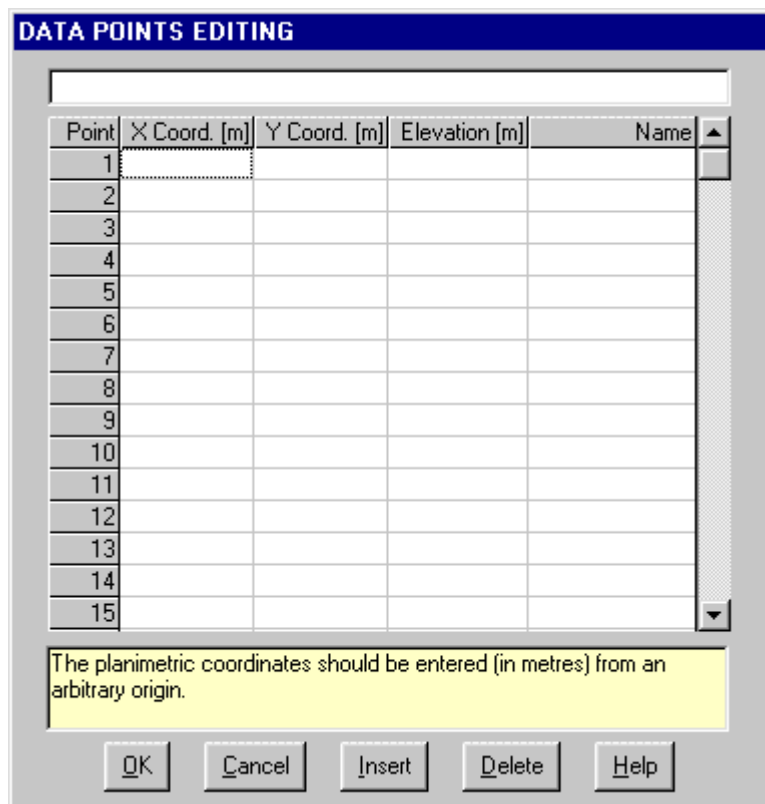
first control button of the Dialogue window. To return to the previous field, press SHIFT+TAB.

- ENTER - moves the cursor to the next field. If the cursor is positioned on one of the window buttons, the corresponding command is executed.
- BACKSPACE - cancels the last character that has been entered.
- DEL - cancels the character to the right of the cursor.
- ESC - closes the Dialogue window without saving the entered values or without executing the command. The <Cancel> button will do the same.
- UP ARROW/ DOWN ARROW - these are used in multiple fields, or those fields that have a list box.
- LEFT ARROW/ RIGHT ARROW - moves the cursor to the previous or next field.
- HOME -moves the cursor to the beginning of the field.
- END - moves the cursor to the end of the field.

A yellow box with a short text that explains the meaning of the value to be entered, can be seen in the lower part of the window. If the text is not completely visible, click the yellow box to read the complete text.

Data Input With Tables

Tables are used to enter long sequences of numerical values and/or text strings. The keys to be used are the following:



- TAB - moves the cursor to the first button in the window. When one presses this key again, the cursor is moved to the next button.
- SHIFT+TAB - moves the cursor to the previous button.
- ENTER - moves the cursor into the next input field. If the cursor is positioned on one of the window buttons, the corresponding command is executed.
- PAGE UP - moves the cursor up 15 lines.
- PAGE DOWN - moves the cursor forward 15 lines.
- UP ARROW - moves the cursor to the input field directly above.
- DOWN ARROW - moves the cursor to the input field directly below.

- LEFT ARROW / RIGHT ARROW - moves the cursor to the field respectively to the left or to the right of the current position.
- HOME - moves the cursor to the beginning of the line.
- END - moves the cursor to the end of the line.
- F2 - copies the field contents to the extended editing field under the title bar in order to facilitate the editing of the long strings. When working in this editing field, please **REMEMBER** to press ENTER, even before clicking the <Ok> button. Double-clicking a field has the same effect as pressing the F2 key.

The tables have two additional buttons:

- <Insert> - creates an empty line before the one in which the cursor is positioned.
- <Delete> - deletes the line in which the cursor is positioned.

IMPORTANT SUGGESTION: you can copy data to or from other programs such as Microsoft Excel:

The data entered in the table can be copied in order to be pasted into another table.
To copy the table's contents:

 press the key combination CTRL+C. The contents will be copied into the Clipboard of Windows.

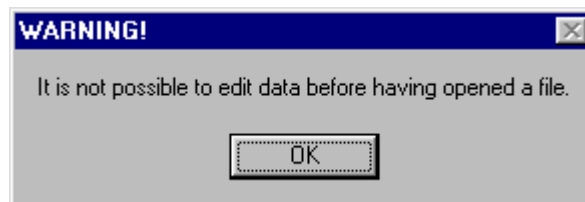
To paste the Clipboard contents into the table:

 press the key combination SHIFT+INS, or CTRL+V.

A yellow box with a short text that explains the meaning of the value to be entered, can be seen in the lower part of the window. If the text is not completely visible, click the yellow box to read the complete text.

Message Windows

The function of these windows is to give information to the user concerning the system status, as in the case of an error due to an improper use of the program.



Help On Line

A complete Help On Line is available. It is possible to ask for information or suggestions related to the commands or the use of the program. In order to access the help on line, proceed as follows:

1. Position the cursor on a field of a dialogue window and press F1.
2. Use the Summary from the Help menu.

Chapter 6 - Open a new project

Project Menu

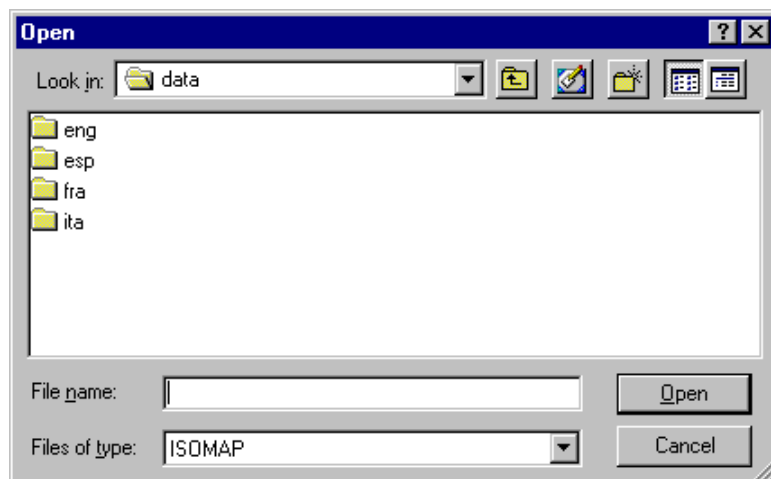
This menu contains all the commands that are used to open and delete the files which contain all the project data. As long as the project name has not been defined, the other menu items are disabled.



The last opened projects are shown in the lower part of this menu.

New Project Command

In order to operate with this program, it is necessary to open a project; this can be a new project or an already existing one. To open a new file:



- choose the New Project command from the menu by first clicking the Project menu item and then on the New Project command. Type the name of the new file in the File Name field and confirm.

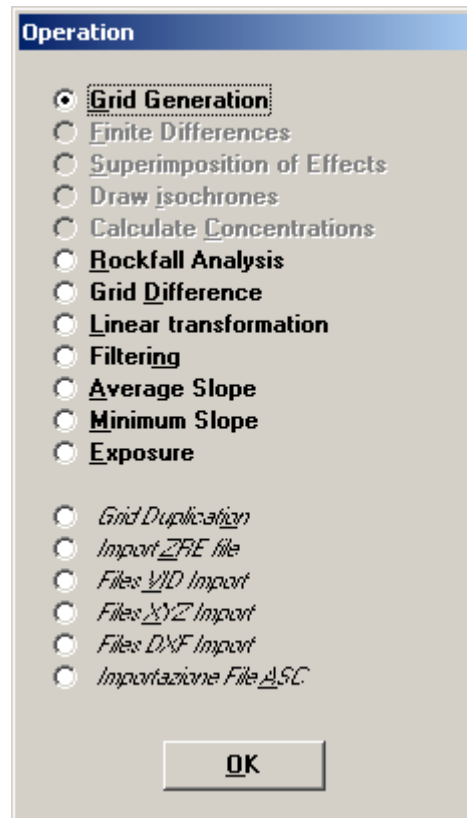
The name of the file in use will be reported in the title bar of the main window.

The name of the file should not contain spaces and/or punctuation marks. It is not necessary to indicate any extension, since the extension “.NFJ” is automatically added: for example, given the name “TEST01”, the file name “TEST01.NFJ” will be internally used by the program.

When opening a new project, it is necessary to choose which operation has to be performed. Only one

operation can be associated to each project name, and it cannot be changed later on.

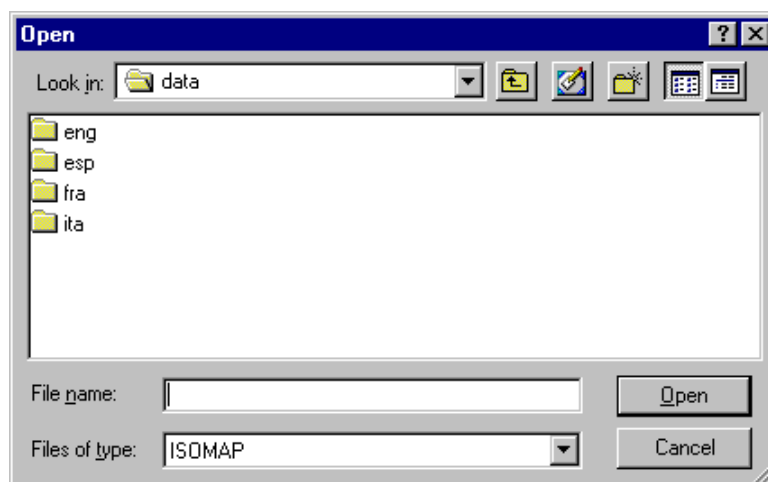
It is possible to create a series of projects, each of which uses the results of a previously elaborated project as a “starting point”: this will be the **Source Project**.



There is no specific command in the program to save data, as these are automatically saved after each data entry or elaboration.

Open Project Command

In order to operate with this program, it is necessary to open a project; this can be a new project or an already existing one. To open an existing file:



choose the Open Project command from the menu by first clicking the Project menu item and then on the Open Project command from the menu. Type or double click the name of the new file in the File Name field and confirm.

The name of the file in use will be reported in the title bar of the main window.

There is no specific command in the program to save data, as these are automatically saved after each data entry or elaboration.

Delete Project Command

This makes it possible to delete all the files pertaining to a project. Before using this command, one should be sure that these data are no longer necessary. Particular care must be taken if the project has been used as a Source Project for other elaborations. Before deleting the files, the program asks for confirmation.

Printer Setup Command

When selecting this command, one calls the printer configuration dialogue window. Here one can verify and modify the default printer setup or select another printer from the list of the installed ones.

Chapter 7 - ISOMAP - Grid Generation

Operation Grid Generation

The basis of any project is the generation of a regular grid. The square grid is generated using one of the available methods, starting from a set of arbitrarily positioned points sampled on the surface under examination. The more regular the disposition and density of the input points are, the more reliable the final result will be, regardless of which calculation method is used. Let us consider the calculation methods that can be used.

Weighted Average

The value for unsampled locations is equal to the weighted average of the values of the nearby samples. The weighted average takes the following form:

$$Z'(p) = \frac{\sum_{i=1}^n (Z(i) * (1 / D(i, p)^\alpha))}{\sum_{i=1}^n (1 / D(i, p)^\alpha)}$$

where:

$Z'(p)$ = estimated value at point p

$Z(i)$ = sampled value at point i

$D(i,p)$ = distance between point p and point i

alpha = weighting exponent

n = number of sampled points

This kind of interpolation is unbiased if the sum of the weights equals one. This is true for the inverse-distance weighted method because the sum of the weights divided by the sum of the weights is equal to one.

The exponent on the distance function above can be altered. Altering the exponent on the distance affects the relative weights of the points. In all cases, a sample that is further from the point to be estimated will receive a lower weight.

As the exponent is increased, the relative influence of more distant points decreases.

A problem that exists with this method is that you have to make a guess at what the exponent should be, and there is no assurance that your guess is correct.

Kriging

The Kriging algorithm, also called “best linear unbiased estimator”, was developed for mining geology. It is “best” because it minimizes the error variance in the estimate, “unbiased” because the weights sum to one, and “linear” because it is a simple weighted average. It also uses a weighted average method to calculate the value at unsampled locations, but rather than guessing at the relationship between similarity of values and distance (like we do when we guess at the exponent in inverse-distance methods), the relationship is calculated from the data using the semivariogram.

Once the lognormal semivariogram has been calculated, the weights $L(i)$ can be obtained to estimate the value of an unsampled location. The Kriging takes the following form:

$$Z'(p) = \sum_{i=1}^n (Z(i) * L(i))$$

where:

$Z'(p)$ = estimated value at point p

$Z(i)$ = sampled value at point i

n = number of sampled points

This set of weights has the property $\sum L(i) = 1$

and guarantee the minimisation of the general expression that represents the variance of the error associated to the estimate relative to point p.

$$2 * \sum_{i=1}^n (L(i) * G(D(i, p)) - g(D(p, p)) - \sum_{i=1}^n (\sum_{j=1}^n (L(i) * L(j) * G(D(i, j))))$$

$$2 * \sum_{i=1}^n (L(i) * G(D(i, p)) - g(D(p, p)) - \sum_{i=1}^n (\sum_{j=1}^n (L(i) * L(j) * G(D(i, j))))$$

where:

$G(D(x,y))$ = average variance associated to the distance between the points x and y

n = number of sampled points

This minimisation is obtained through the solution of a system of n+1 linear equations.

Method of the Weighted Average of Polynomial Surfaces

One of the greatest problems of the previously described methods is the impossibility of estimating values outside the range defined by the maximum and minimum values of the sampled points. This problem has the immediate consequence of preventing one from extrapolating, in a significant way, the values beyond the area that is actually covered by the sampled points.

Hydrogeology or rockfall analysis applications, based on the treatment of partial derivatives of the surface (gradients), are in fact extremely sensitive to irregularities, even small ones, of the surface.

For this reason a more complex algorithm has been made available, that is based on an auxiliary polynomial estimator $Z''(i)$ which represents the regional trend of the variable under examination.

The estimate therefore assumes the following form:

$$Z'(p) = \sum_{i=1}^n (Z''(i) * (1 / D(i, p)^\alpha)) / \sum_{i=1}^n (1 / D(i, p)^\alpha)$$

where:

$Z'(p)$ = estimated value at point p

$Z''(i)$ = estimated value in function of the value assumed at point i

$D(i,p)$ = distance between point p and point i

alpha = weight exponent

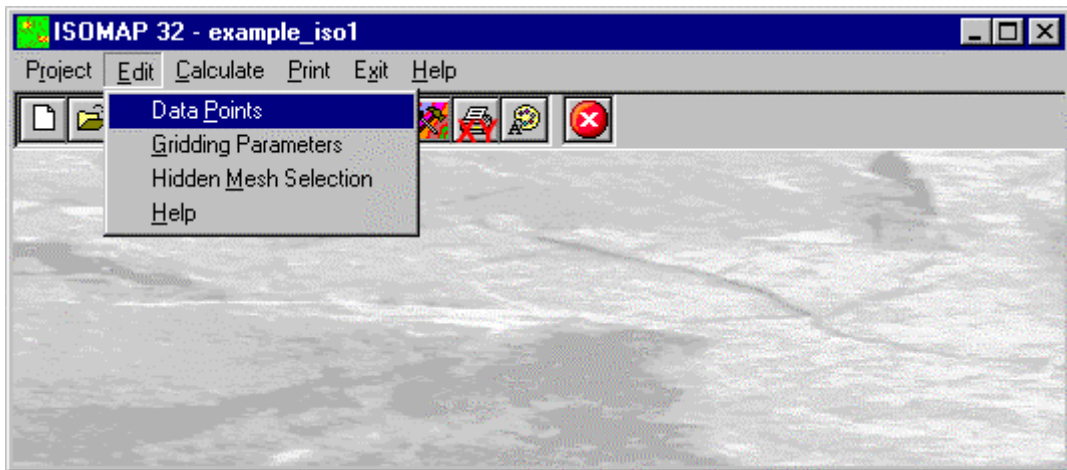
n = number of sampled points

Procedure

- Select the "New Project" command from the "Project" menu
- Choose a new name for the project
- Select "Grid Generation" in the "Operation" window
- Use the "Edit Points" in the "Edit" menu to input the spot sampled points
- Use the "Grid Parameters" in the "Edit" menu to choose how the grid will be calculated
- Select "Calculation" on the menu bar

Edit Menu - Grid Generation

This menu is used to enter and edit the input data used in the gridding operations.



Data Points Command

This enables one to enter and edit the input data points.

The "Data Points" Dialogue box

The following data should be entered in the "Data Points" window:

 The dialog box is titled "DATA POINTS EDITING" and contains a table with the following structure:

Point	X Coord. [m]	Y Coord. [m]	Elevation [m]	Name
1				
2				
3				
4				
5				
6				
7				
8				
9				
10				
11				
12				
13				
14				
15				

The planimetric coordinates should be entered (in metres) from an arbitrary origin.

Buttons: OK, Cancel, Insert, Delete, Help

- *X and Y Coordinates*: the planimetric coordinates should be entered (in metres) from an arbitrary origin.
- *Elevation*: the ground elevation (or another physical quantity) that has to be represented on the Z-axis.
- *Name*: this is an optional caption of the data points. There are two special characters that can be added at the beginning of the point names (notice that those characters will not be printed on the graphical output): when the point name begins with the @ character, the value will be used in the calculation but will not be printed; when the point name begins with the # character, the data point will be printed (if one of the *Sampled locations* options has been selected) but will not be used in the calculation.

Gridding Parameters Command

The Isomap module creates a regular grid that calculates the values of the physical quantity for each node of a square mesh using different interpolation algorithms. The required parameters are entered in the Gridding Parameters dialogue box.

The “Gridding Parameters” Dialogue Box

The following data are entered in the “Gridding Parameters”:

GRIDDING PARAMETERS	
Calculation algorithm	Weighted Average of Polynomial Surfaces
Order of the polynomial surface [-]	0
Mesh size [m]	125
Threshold distance [m]	5550
Weighting exponent [-]	4
Minimum X coordinate [m]	350
Maximum X coordinate [m]	3225
Minimum Y coordinate [m]	230
Maximum Y coordinate [m]	355
Range of the X coordinates	350 < X < 3125
Range of the Y coordinates	230 < Y < 256
Range of the Z coordinates	200 < Z < 214.5

OK Cancel Help

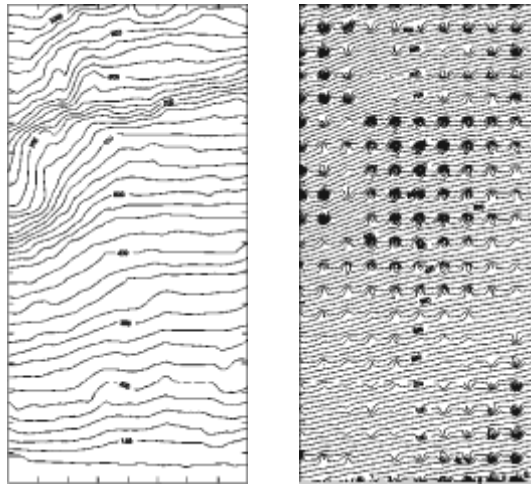
The calculation of the grid can be performed using the Kriging or the Weighted Average of Polynomial Surfaces; a zero-order polynomial surface is a special case that corresponds to the ordinary inverse-distance weighted average method.

- **Calculation Algorithm:** the calculation of the grid can be performed using the Kriging or the Weighted Average of Polynomial Surfaces; a zero-order polynomial surface is a special case that corresponds to the ordinary inverse-distance weighted average method.
- **Order of the polynomial surface:** the basic concept of the Weighted Average of Polynomial Surfaces is that the best fitting polynomial surface is calculated, as a first step, from the data points, then a gradual vertical shift allows one to obtain a final surface that passes through the sampled locations. Going away from the sampled points, the calculated surface converges to the best fitting polynomial surface. A zero-order polynomial surface ($Z = a$) is a special case that corresponds to the classic inverse-distance weighted average method. A first-order polynomial surface ($Z = a + b X + c Y$) is a dipping plane that gives, for example, a good approximation for a simple water table only sampled in three wells. The surfaces of the second and third order are more complex and can better approximate a surface with many sampled locations. These surfaces require a homogeneous distribution of the sampled points because the gradient of the surface rapidly increases as it becomes distant from the sampled area.
- **Mesh size:** the mesh size (in metres) should be such as not to exceed 500 grid elements along each X and Y axis; if this value is exceeded, the mesh size is automatically adjusted.
- **Threshold distance:** this is the radius (in metres) of the circle wherein the points that will be considered to calculate a single grid value lie. As the used methods are based on an inverse-distance weighted average, it could be a good idea to keep this value sufficiently large so as to consider all the sampled points in the calculations, thus also obtaining a smoother surface with a small mesh size.
- **Weighting exponent:** this is the exponent that is applied to the inverse distance which is used in the weighted averages. The greater the exponent, the greater is the influence of a sampled point on the calculated grid. This means that too small exponent values can generate a surface with “peaks” around each sampled point, while too large exponent values can generate a “benched” surface. Values between 4 and 6 can normally yield good results.
- **Minimum X coordinate:** together with the ordinate of the lower side, this defines the lower left corner of the grid.
- **Maximum X coordinate:** together with the ordinate of the upper side, this defines the upper right corner of the grid.
- **Minimum Y coordinate:** together with the abscissa of the left side, this defines the lower left corner of the grid.

- *Maximum Y coordinate*: together with the abscissa of the right side, this defines the upper right corner of the grid

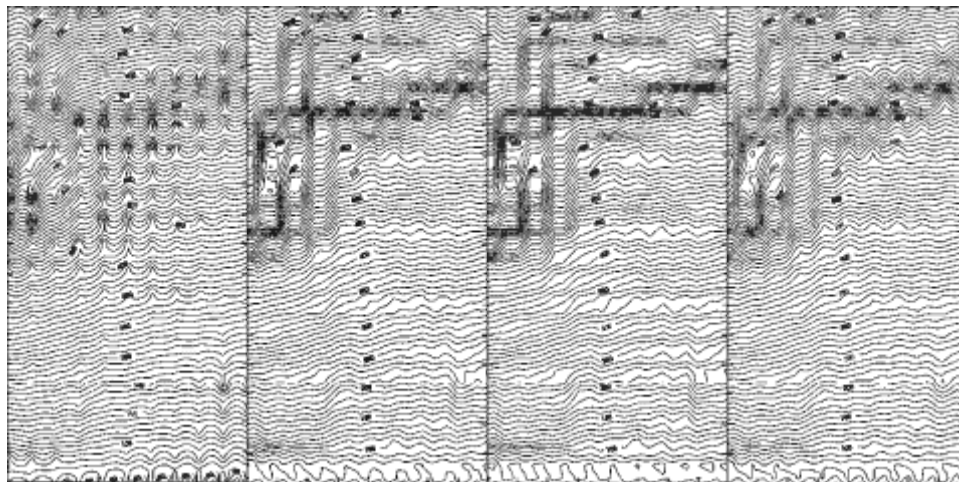
Example

Example: an original surface, with data points regularly sampled on each grid node, has been made denser to show the effect of the *Weighting exponent*. The best result has been obtained with Exponent = 3.



Original surface Exponent = 3

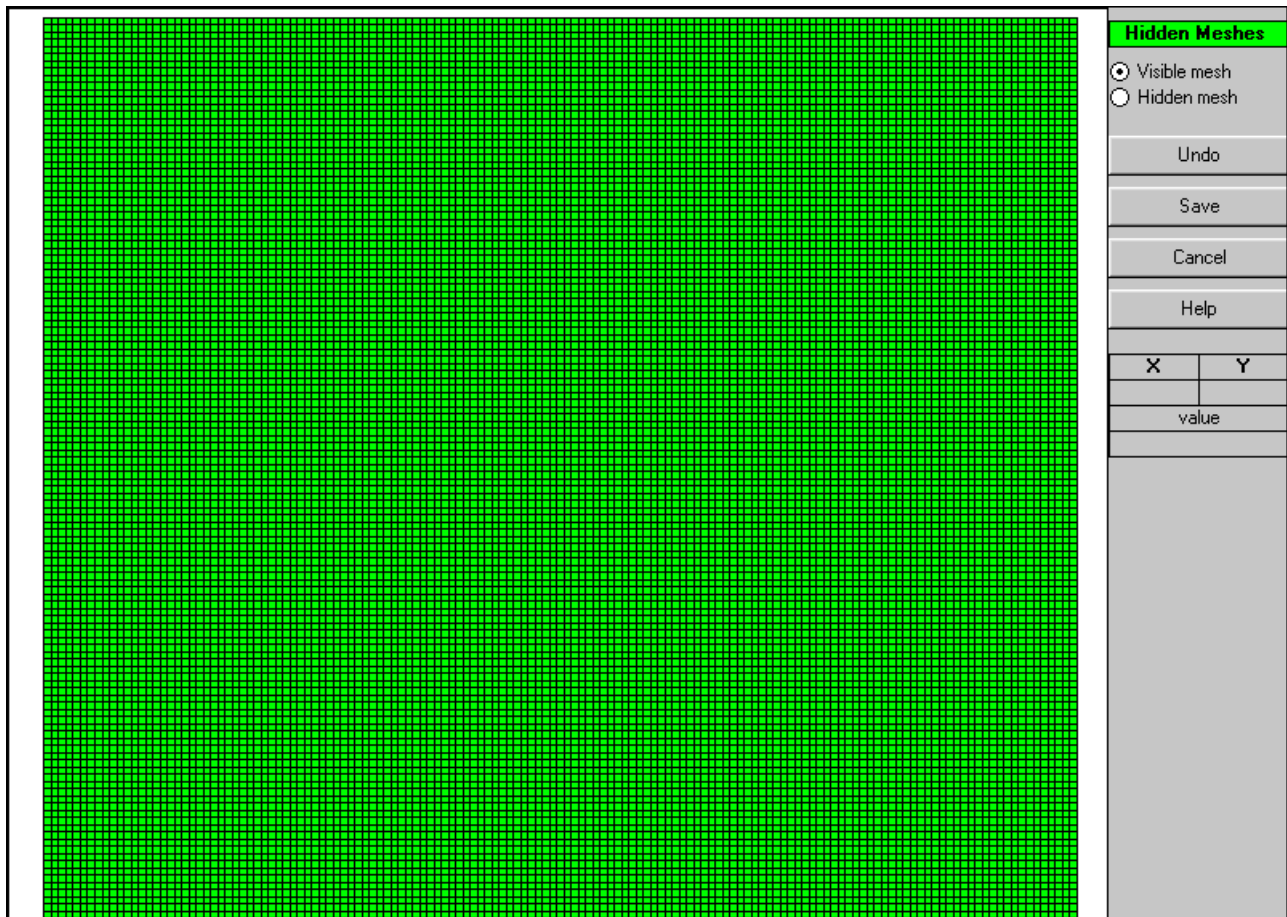
Exponent values 1 and 2 produced a surface with “peaks” around each sampled point (particularly emphasised with the minimum value); on the other hand, Exponent values 4 and 8 produced a “benched” surface (particularly emphasised with the maximum value).



Exponent = 1 Exponent = 2 Exponent = 4 Exponent = 8

Hidden Mesh Selection Command

This command allows one to hide some of the grid meshes. A graphical editing window is opened and the grid is shown: by default, all the meshes are not hidden, and appear as green squares.

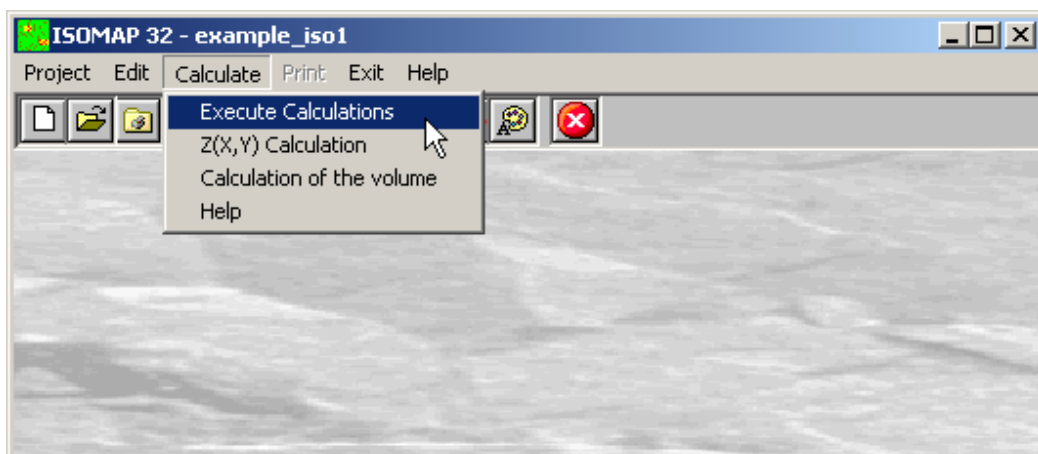


The following procedure allows one to hide some meshes:

- <Hidden>/<Shown>: select one of the two option buttons to choose whether to hide or show the meshes. The hidden meshes will appear as red squares.
- A single left-click assigns the currently selected status to a single grid mesh. Holding down the left button and moving the mouse over the grid allows a continuous (multiple) selection of the meshes. Finally, a right-click fills an area that is delimited by a line of previously selected meshes.
- <Cancel editing>: cancels the very last editing operation.
- <Save>: saves the selection of hidden meshes.
- <Cancel>: closes the window without saving any modifications.

Calculate Menu - Grid Generation

With this menu, one can calculate the regular grid using the entered data points and the previously defined parameters.

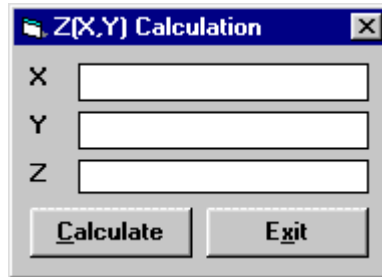


Execute Calculation Command

With this command, the program generates the grid. Use the print menu to view the results of the elaboration.

Z(X,Y) Calculation Command

With this command, one can evaluate the "z" value of any point of the surface; enter the coordinates of the point in the window and click the <Calculate> button.



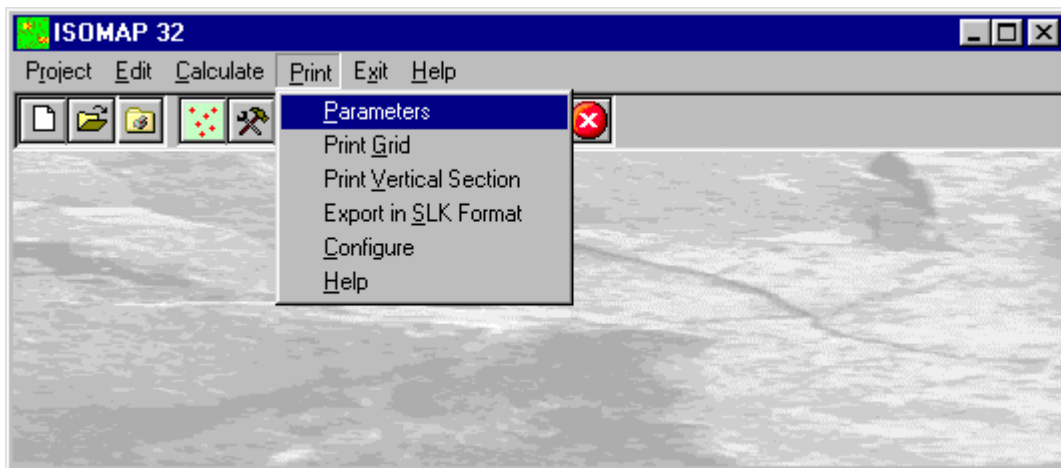
The program calculates the required value using a bi-cubic splines interpolation algorithm, and displays the result in the "Z" field.

Volume Calculation Command

With this command, the programme calculates the volume (surface integral) of the whole grid, and shows it in a message box.

Print Menu

The Print menu is used to configure the graphical output and plot the surface in Map, Wireframe View, or Solid View form.



Parameters Command

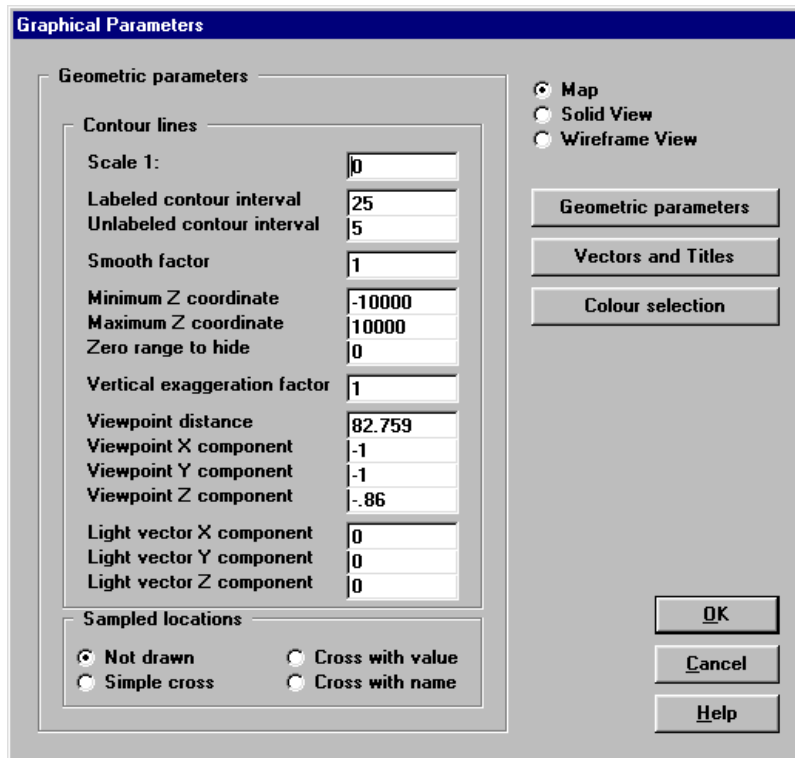
With this command, the "Graphical Parameters" dialogue window is shown.

The "Graphical Parameters" Dialogue Box

The "Graphical Parameters" dialogue window allows the configuration of most of the graphical parameters (see also the "Configure" item of the Print menu).

- *Map, Wireframe View, Solid View*: one can here choose the representation type.

The three buttons on this dialogue window allow one to select different parameter sets.

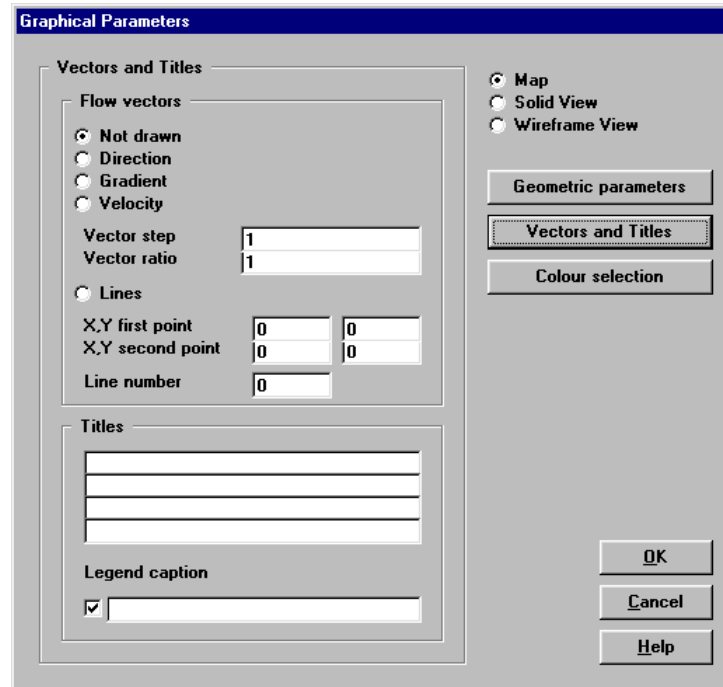
<Geometric Parameters> Button

- **Scale:** this is the scale factor that has to be used in the graphical output. It is the denominator in the fraction $1:scale$
- **Labelled contour lines interval:** this is the elevation difference between two labelled contour lines. One ought to remember that the number of lines is inversely proportional to the given interval. A too small interval will slow down the drawing speed.
- **Unlabelled contour lines interval:** this is the elevation difference between adjacent unlabeled contour lines. One ought to remember that the number of lines is inversely proportional to the given interval. A too small interval will slow down the drawing speed.
- **Smooth factor:** this is the number of elements into which each grid element is divided, in order to represent more detailed contour lines; the larger this number the more accurate and attractive the drawing will be. If a high value is used there will consequently be a longer computing time and a larger file size, which increase proportionally with the square of the Smooth factor. If the Smooth factor is equal to one, a special faster algorithm is used. The Smooth factor value can vary between one and nine.
- **Minimum Z coordinate:** this defines the minimum threshold value of the contour lines that have to be represented. This parameter can be useful, for example, when plotting concentration contour lines where it would be erroneous to represent negative values. The range between minimum and maximum is an open interval.
- **Maximum Z coordinate** this defines the maximum threshold value of the contour lines that have to be represented. This parameter can be useful when one wants to eliminate values that are too high, such as the borders of polynomial extrapolations.
- **Zero range to hide:** this parameter allows one to hide the contour lines close to zero. This option is useful, for example, for the representation of magnetometric data.
- **Vertical exaggeration factor:** this factor enables one to stress the drawing, thus enhancing the anomalies of the plotted quantity.
- **Viewpoint distance:** this is only used in the *Solid View*. It is the absolute distance (in meters) between the viewpoint and the centre of the grid. This parameter is not used in the *Wireframe View*, because, in this case, the viewpoint distance is considered to be infinite.
- **Viewpoint Vector X , Y, Z components:** these define the direction of the viewpoint from the centre of the grid. The program disregards the vector magnitude, and automatically considers only the direction. It is used both in the *Solid View* and in the *Wireframe View*.
- **Light Vector X , Y, Z components:** these define the direction of the light point from the centre of the grid. If

the three coordinates are equal to zero, no light effect is added. These parameters are used in the *Map* and in the *Solid View*.

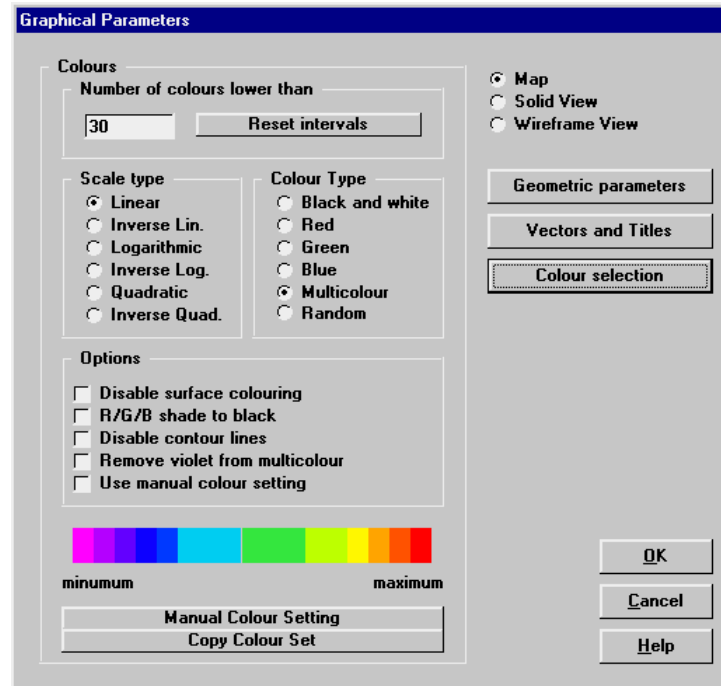
- *Sampled locations*: one can decide if and how the sampled locations will be drawn. The available options are: a simple cross, a cross labelled with the value of the sample, a cross labelled with the name of the location, or no representation at all.

<Vectors and Titles> Button



- *Flow vectors*: with this option it is possible to draw flow vectors as small arrows positioned on the grid nodes. There are three options: Direction - unit vectors are drawn, oriented towards the dip direction; Velocity - the velocity vectors are drawn, as defined in Darcy's law, with the lengths proportional to the product of the hydraulic head gradient and the hydraulic conductivity; Gradient - flow vectors are shown as arrows oriented towards the dip direction: the vector length is proportional to the dip of the surface. No vector is drawn with the No Vector option.
- *Vector step*: this is used to space the vectors further apart; when assigning a value equal to 3, a vector, for example, will be drawn every three grid nodes.
- *Vector length / mesh width ratio*: the maximum (or unit) length of the vectors is, by default, equal to the mesh width. It is possible to alter this value by assigning a vector length / mesh width ratio that is different from one.
- *Lines*: this is used to draw a set of continuous flow lines. The required data are: the X,Y coordinates of the end points of an imaginary segment, and the number of equally spaced points along this segment through which the flow lines will pass.
- *Titles*: entering a title or sub-titles is not mandatory.
- *Legend Caption*: when a *Map* or a *Solid View* is coloured, a legend is automatically added. It is possible to add a caption to describe the plotted quantity.
- *Legend check box*: unchecking this box, the legend will not be plotted; this option is useful to export a "clean" graphic output to other programs like GIS.

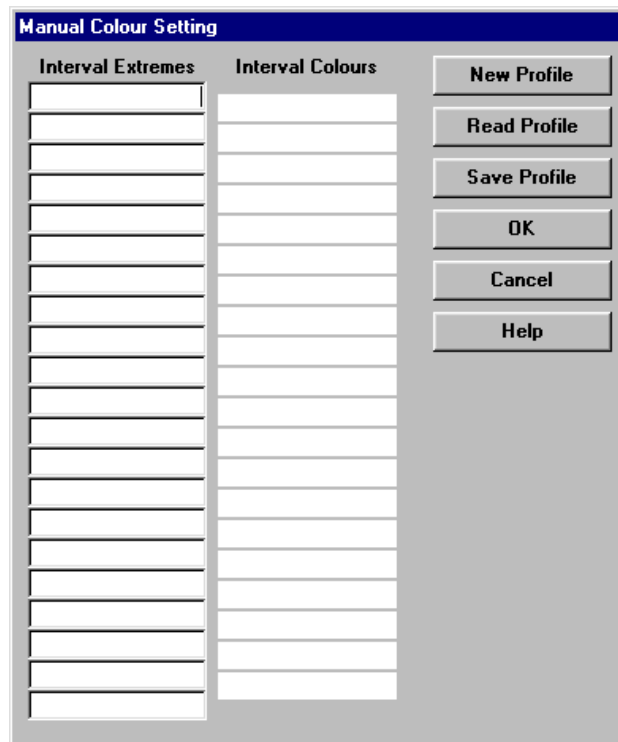
<Colour Selection> Button



- *Number of colours lower than*: the program automatically detects the optimal contour line intervals, using multiples of $1.0E^n$, $2.0E^n$ and $5.0E^n$. Setting the *Number of colours lower than* parameter, the program is forced to choose a value of the contour line interval that produces a number of contour lines (and colour ranges) lower than the given value.
- *"Reset intervals" button*: this button activates a procedure that recalculates the contour line intervals as a function of the previous parameter.
- *Scale type*: the colour shade distribution can be organised using different scale types: linear, inverse linear, logarithmic, inverse logarithmic, quadratic or inverse quadratic.
- *Colour type*: the colour sets can be generated in different ways: Black and White, Red, Green, Blue, Multicolour, and Random. With the Black and White option one obtains a grey-scale output; With the Red, Green or Blue option the selected colour shades towards white; the Multicolour options allows one to create outputs using a continuous scale of colours, and the Random option assigns a colour that is randomly chosen to each level.
- *Disable surface colouring*: when this option is activated, the program does not colour the areas between the contour lines.
- *R/G/B shade to black*: with this option the selected colour will shade towards black instead of towards white.
- *Disable contour lines*: when this option is activated, the program no longer draws the contour lines; if both *surface colouring* and *contour lines* are disabled, nothing appears on the graphical output.
- *Remove violet from multicolour*: this option allows one to start the multicolour scale (if selected) from the blue instead of from the violet colour.
- *Use manual colour settings*: one can choose to manually define the contour line values and the colours to fill the area between the adjacent contour lines. To manually define those parameters, click the <Manual Colour Setting> button.
- *The <Copy Colour Set> Button*: If the current interval number is lower than 21, the "Manual Colour Setting" dialogue box is opened, and the current settings are copied and can then be modified, otherwise the button is disabled.

The <Manual Colour Setting> Button

The <Manual Colour Setting> button opens the "Manual Colour Setting" dialogue box, where you can define the contour line values and the colour one wishes to assign to each interval. These settings can be saved as personalised colour profiles.



To change a colour, double click the coloured field and choose the new colour to be assigned to the interval from the Colours Dialogue Box.

Each time a colour set has been defined and confirmed, it is saved as a default manual colour profile. It will then be used each time the *Use manual colour settings* option is selected, if a different colour profile has not been loaded or saved; in this case, the default colour profile is overwritten, and the selected (saved or loaded) colour profile will be permanently associated to the current project, regardless of the default manual colour configuration.

- <New Profile> button: if the current interval number is lower than 21, the current automatic settings are copied and can then be modified, otherwise all the fields are cleared.
- <Read Profile> button: the program reads a previously saved colour profile from the hard disk; this colour profile will be permanently associated to the current project.
- <Save Profile> button: this allows one to save the current colour profile on the hard disk; this colour profile will be permanently associated to the current project.

Print Grid Command

With this command, the Print Preview window is opened and the plot is shown; it is then possible to directly print the graphical output, or export it to different formats.

The Graphical Output Preview Window

The Toolbar is located in the upper side of the preview window.

The Toolbar allows fast access to the commands with the mouse. Click the corresponding icon, to select one of the commands that belong to the Toolbar. The Toolbar displays the following commands:



- **Zoom +** : clicking the first icon activates the ZOOM function (it can only be used with the mouse) that permits the enlargement of part of the drawing. The function remains active until the Zoom - icon is selected. To enlarge a part of the drawing:

click the icon, and then select the area to be enlarged by clicking the upper-left corner and dragging the mouse pointer to the lower-right corner. At this point, release the mouse button. Note: due to the low resolution of the screen, the texts could appear in a slightly different scale at different zoom levels. This does not affect the quality of the final printouts.

- **Zoom -** : click this icon to return to the original scale of the preview.

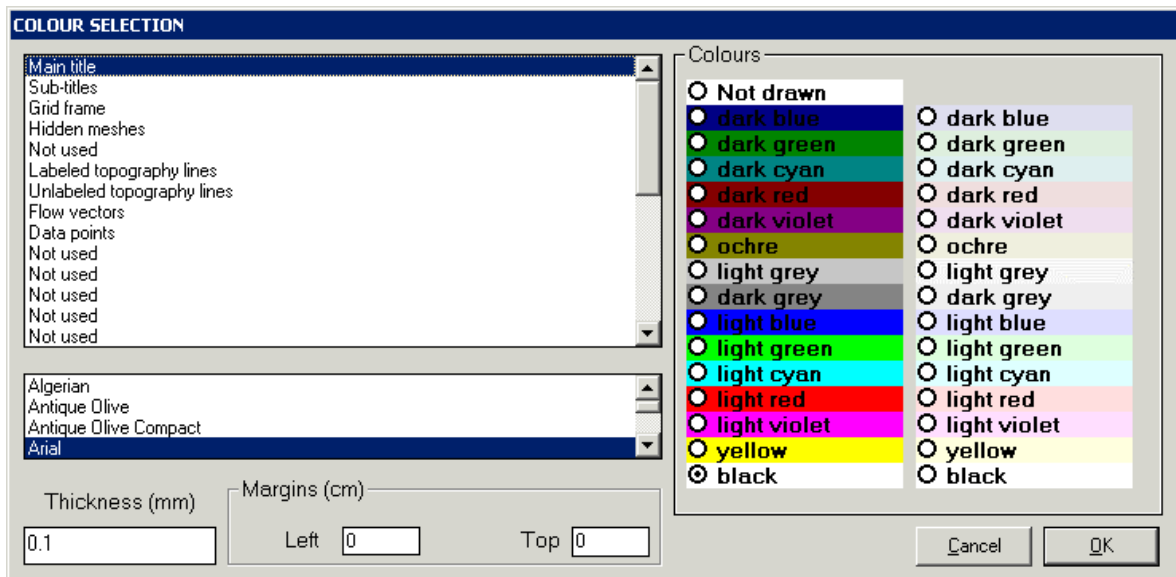
- Vertical Scale: vertical scale of the graphical output. The scales are separated to allow a vertical exaggeration factor.
- Abscissa, Ordinate: the X and Y planimetric coordinates of the nodes of the line, from the arbitrary origin used to create the grid, along which the calculated points are aligned.
- Ok Button: the print preview window is shown, and the vertical section is plotted.
- Cancel Button: this is used to abort the current operation.

Export in SLK Format Command

With this command, a window is shown to allow one to select which quantity has to be exported as an SLK file (a format that is compatible with Microsoft Excel and other spreadsheets).

Configure Command

With this command, one can define the graphical properties of the different objects in the graphical output.



One can associate a colour, a line thickness and a character font to each object. Notice that not all the objects have both a line thickness and a character font: for example, a *title* only requires the colour and the character font to be defined.

- Click an object to select it (use the scroll bar to see the entire list)
- Click one of the option buttons, in the “colours” frame, to select the colour that has to be associated to the selected object. The *Not drawn* option hides the object of the graphical output.
- If the object contains texts, one can choose a character font from the list (use the scroll bar to see the entire list)
- If the object contains lines, one can assign a thickness to the lines (in mm). If the value is zero, the program uses the thinnest line on the output device.
- It is possible, as an option, to assign a left and a top margin (in cm) to the whole graphical output.

NOTE: although the available set is limited to fifteen colours, they can be manually customised; double-click the coloured bar to open the Colour Dialogue Box and choose a different RGB value associated to the selected colour.

Exit Menu

This command allows one to exit the program. There is no specific command to save the entered data as these are automatically saved each time they are modified.

Chapter 8 - ISOMAP - Slope Map

Slope Map (ISOMAP module)

With this command, the program creates a grid that contains the slope (in degrees) of a topographic surface. It is possible to choose whether the program has to calculate the maximum or the average slope of the ground around each node of the grid. As i , j are the grid node indexes and l is the mesh size, we obtain:

maximum slope =

$$\sqrt{\max(z(i+1, j) - z(i, j), z(i-1, j) - z(i, j))^2 / l^2 + \max(z(i, j+1) - z(i, j), z(i, j-1) - z(i, j))^2 / l^2}$$

average slope =

$$\sqrt{(z(i+1, j) - z(i-1, j))^2 / 4l^2 + (z(i, j+1) - z(i, j-1))^2 / 4l^2}$$

Procedure

- Select the "New Project" command from the "Project" menu
- Choose a new name for the project
- Select "Maximum Slope Map" or "Average Slope Map" in the "Operation" window
- Select the project that contains the original topographic surface
- Select "Calculation" on the menu bar

Edit menu - Slope Map

With this command, the program creates a grid that contains the slope (in degrees) of a topographic surface. When creating the new project, it is possible to choose whether the program has to calculate the maximum or the average slope of the ground around each node of the grid.



Hidden Mesh Selection Command

This command allows one to hide some of the grid meshes.

For more information, see the Hidden Mesh Selection - ISOMAP - Grid Generation.

Calculate Menu - Slope Map

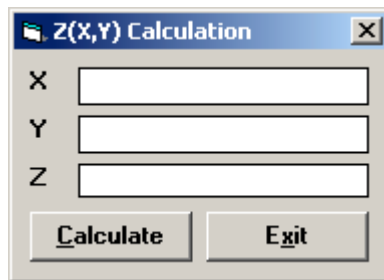
This menu allows one to calculate a grid that contains the slope of a topographic surface (in degrees).

Execute Calculations Command

This command allows one to calculate the slope of a topographic surface (in degrees).
Use the print menu to view the results of the elaboration.

Z(X,Y) Calculation Command

With this command, one can evaluate the "z" value of any point of the surface; enter the coordinates of the point in the window and click the <Calculate> button.



The program calculates the required value using a bi-cubic splines interpolation algorithm, and displays the result in the "Z" field.

Volume Calculation Command

With this command, the programme calculates the volume (surface integral) of the whole grid, and shows it in a message box.

Print Menu - Slope Map

The Print menu is used to configure the graphical output and to plot the surface in Map, Wireframe View or Solid View form.

For more information, see the Print Menu - ISOMAP - Grid Generation.

Chapter 9 - ISOMAP - Exposure Map

Exposure Map (ISOMAP module)

With this command, the program creates a grid that contains the angle from the North of the dip direction of the ground. The Y-axis must be oriented to the North. The South direction will result to be equal to 180°; both the East and West directions will be equal to 90°.

Procedure

- Select the “New Project” command from the “Project” menu
- Choose a new name for the project
- Select “Exposure Map” in the “Operation” window
- Select the project that contains the original topographic surface
- Select “Calculation” on the menu bar

Note: as an alternative, it is possible to obtain interesting results working on the original topographic surface using a horizontal Light Vector.

Edit menu - Exposure Map

With this command, the program creates a grid that contains the angle from the North of the dip direction of the ground. The Y-axis must be oriented to the North. The South direction will result to be equal to 180°; both East and West directions will be equal to 90°.



Hidden Mesh Selection Command

This command allows one to hide some of the grid meshes.

For more information, see the Hidden Mesh Selection - ISOMAP - Grid Generation.

Calculate Menu - Exposure Map

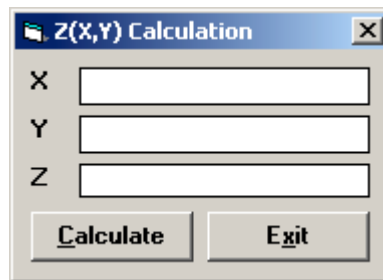
This menu allows one to calculate the angle from the North of the ground dip direction.

Execute Calculations Command

This command allows one to calculate the angle from the North of the ground dip direction. Use the print menu to view the results of the elaboration.

Z(X,Y) Calculation Command

With this command, one can evaluate the "z" value of any point of the surface; enter the coordinates of the point in the window and click the <Calculate> button.



The program calculates the required value using a bi-cubic splines interpolation algorithm, and displays the result in the "Z" field.

Volume Calculation Command

With this command, the programme calculates the volume (surface integral) of the whole grid, and shows it in a message box.

Print Menu - Exposure Map

The Print menu is used to configure the graphical output and plot the surface in Map, Wireframe View, or Solid View form.

For more information, see the Print Menu - ISOMAP Menus - Grid Generation.

Chapter 10 - ISOMAP - Grid Difference

Grid Difference (ISOMAP module)

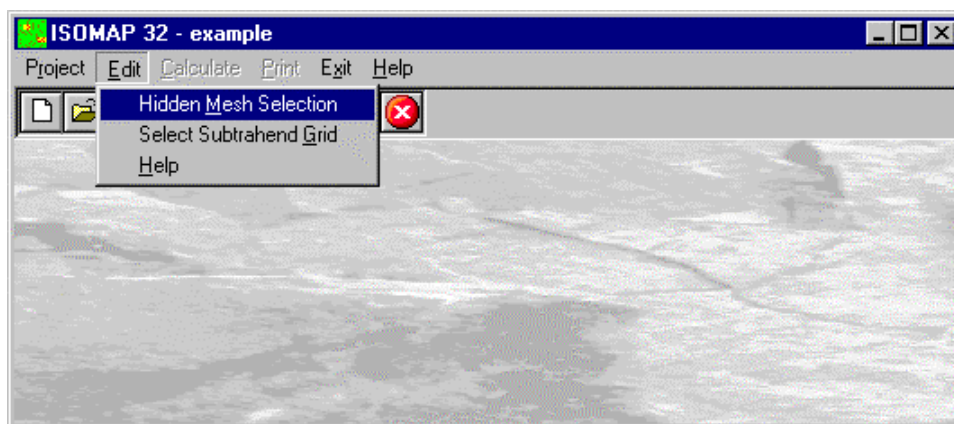
With this command, the program creates a new grid that is calculated as the node-by-node subtraction of two given grids. A typical application could be the evaluation of the removed ground, which is obtained by subtracting two grids that represent the topographic surface before and after an excavation. It is mandatory that the two grids have the same number of rows and columns.

Procedure

- Select the “New Project” command from the “Project” menu
- Choose a new name for the project
- Select “Grid Difference” in the “Operation” window
- Select the project to extract from the “minuend” grid
- Select the “Select Subtrahend Grid” command from the “Edit” menu
- Choose an existing project (of the same grid size) to extract from the “subtrahend” grid
- Select “Calculation” on the menu bar

Edit menu - Grid Difference

With this command, the program creates a new grid that is calculated as the node-by-node subtraction of two given grids. A typical application could be the evaluation of the removed ground, which is obtained by subtracting two grids that represent the topographic surface before and after an excavation. It is mandatory that the two grids have the same number of rows and columns.



Hidden Mesh Selection Command

This command allows one to hide some of the grid meshes.

For more information, see the Hidden Mesh Selection - ISOMAP Menus - Grid Generation.

Select Subtrahend Grid Command

This command allows one to choose an existing project (of the same grid size) to extract from the “subtrahend” grid

The “Select Subtrahend Grid” Dialogue Box

To select a file, type the name of the project to extract from the “subtrahend” grid in the File Name field, or browse the hard disk and double-click the project file name.

Calculate Menu - Grid Difference

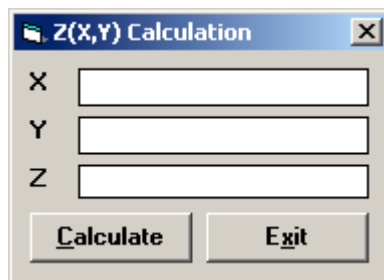
Once selected the Subtrahend Grid, this menu allows one to calculate the grid difference as the node-by-node subtraction of the two given grids.

Execute Calculations Command

Once selected the Subtrahend Grid, this command calculated the grid difference as the node-by-node subtraction of the two given grids. Use the print menu to view the results of the elaboration.

Z(X,Y) Calculation Command

With this command, one can evaluate the “z” value of any point of the surface; enter the coordinates of the point in the window and click the <Calculate> button.



The program calculates the required value using a bi-cubic splines interpolation algorithm, and displays the result in the "Z" field.

Volume Calculation Command

With this command, the programme calculates the volume (surface integral) of the whole grid, and shows it in a message box.

Print Menu - Grid Difference

The Print menu is used to configure the graphical output and plot the surface in Map, Wireframe View, or Solid View form.

For more information, see the Print Menu - ISOMAP - Grid Generation.

Chapter 11 - ISOMAP - Linear Transformation

Linear Transformation (ISOMAP module)

The linear transformation operator makes it possible to perform a linear transformation of the surface, performing the following three sequential operations for each node:

1. sums a first translation factor (a);
2. multiplies by a scale factor (b);
3. sums a second translation factor (c).

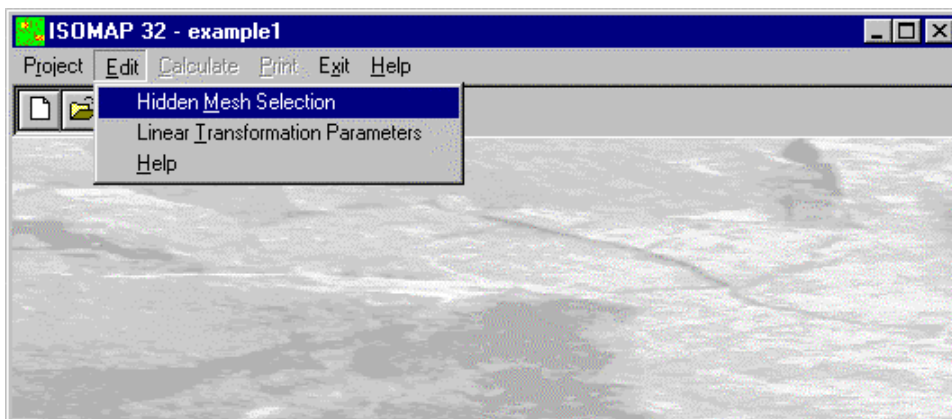
The general formula $z'=(z+a)*b+c$ makes it possible to perform any linear transformation such as the Celsius-Fahrenheit conversion, with $a=0$, $b=9/5$ and $c=32$.

Procedure

- Select the “New Project” command from the “Project” menu
- Choose a new name for the project
- Select “Linear Transformation” in the “Operation” window
- Select the project to be transformed
- Select the “Linear Transformation Parameters” command from the “Edit” menu
- Select “Calculation” on the menu bar

Edit Menu - Linear Transformations

The linear transformation operator makes it possible to perform a linear transformation of the surface, performing the following three sequential operations for each node:



1. sums a first translation factor (a);
2. multiplies by a scale factor (b);
3. sums a second translation factor (c).

The general formula $z'=(z+a)*b+c$ makes it possible to perform any linear transformation such as the Celsius-Fahrenheit conversion, with $a=0$, $b=9/5$ and $c=32$.

Hidden Mesh Selection Command

This command allows one to hide some of the grid meshes.

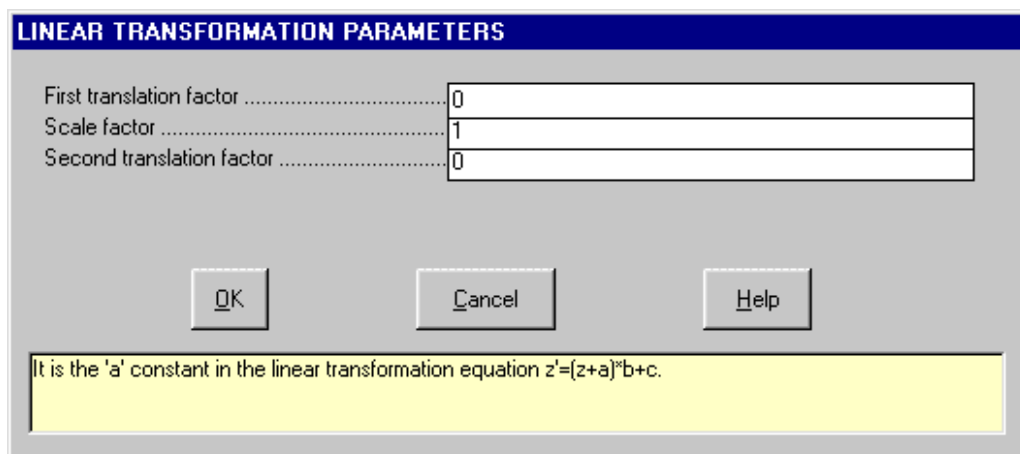
For more information, see the Hidden Mesh Selection - ISOMAP - Grid Generation.

Linear Transformation Parameters Command

This command enables one to define the parameters for the linear transformation.

The “Linear Transformation Parameters” Dialogue box

In the “Linear Transformation Parameters” dialogue window the following data are required:



- *First translation factor*: it is the constant 'a' in the linear transformation $z'=(z+a)*b+c$ formula.
- *Scale factor*: it is the scale factor 'b' in the linear transformation formula.
- *Second translation factor*: it is the constant 'c' in the linear transformation formula.

Calculate Menu - Linear Transformation

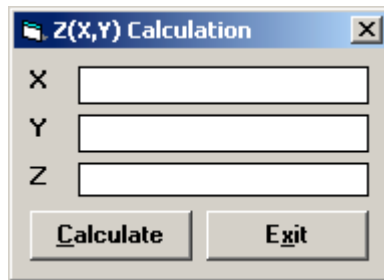
With this menu, a linear transformation is performed on each node of the source grid.

Execute Calculations Command

With this command, the linear transformation is performed on each node of the source grid, using the given parameters. Use the print menu to view the results of the elaboration.

Z(X,Y) Calculation Command

With this command, one can evaluate the “z” value of any point of the surface; enter the coordinates of the point in the window and click the <Calculate> button.



The program calculates the required value using a bi-cubic splines interpolation algorithm, and displays the result in the "Z" field.

Volume Calculation Command

With this command, the programme calculates the volume (surface integral) of the whole grid, and shows it in a message box.

Print Menu - Linear Transformation

The Print menu is used to configure the graphical output and plot the surface in Map, Wireframe View, or Solid View form.

For more information, see the Print Menu - ISOMAP – Grid Generation.

Chapter 12 - ISOMAP - Filtering

Filtering (ISOMAP module)

This operator performs a numerical filtering in the space domain, that is to say, the convolution of a matrix operator of order $2n+1$ with the grid itself.

The filters should always be symmetrical to the axis that passes through its centre, and to the two diagonals. By using a unit matrix one will obtain a grid that is the moving average of the original grid. By using this command in conjunction with the Grid Difference operation, one can, for example, separate the local gravity anomalies from the regional ones.

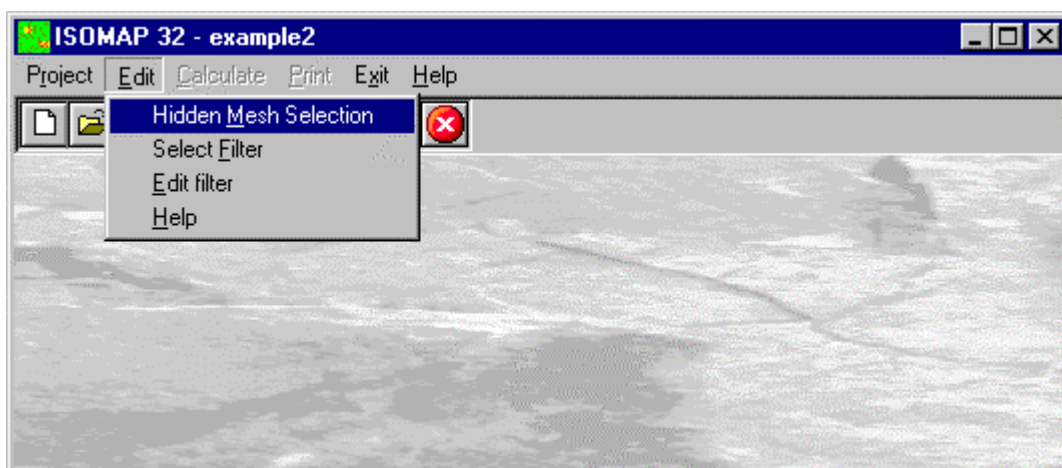
Procedure

- Select the “New Project” command from the “Project” menu
- Choose a new name for the project
- Select “Filtering” in the “Operation” window
- Select the project to be filtered
- Select the “Select Filter” command from the “Edit” menu
- Choose a filter (you can create a new one with a text editor)
- Select “Calculation” on the menu bar

Edit Menu - Filtering

This operator performs a numerical filtering in the space domain, that is to say, the convolution of a matrix operator of order $2n+1$ with the grid itself.

The filters should always be symmetrical to the axis that passes through its centre, and to the two diagonals. By using a unit matrix one will obtain a grid that is the moving average of the original grid. By using this command in conjunction with the Grid Difference operation, one can, for example, separate the local gravity anomalies from the regional ones.



Hidden Mesh Selection Command

This command allows one to hide some of the grid meshes.
For more information, see the Hidden Mesh Selection - ISOMAP - Grid Generation.

Select Filter Command

With this command, the program shows the “Select Filter” dialogue box.

The “Select Filter” Dialogue box

To select a file, type the name of the file containing the digital filter to be used for the current operation in the File Name field, or browse the hard disk and double-click the filter file name.

To create a new digital filter, type a new name and confirm, and then select the command Edit Filter from the Edit menu.

Edit Filter Command

With this command Notepad is started, and one can create or edit a custom filter.
The structure of the filters is quite simple: the order of the matrix operator is written in the first line. This should always be an odd number. The coefficients are written in the following lines, separated by spaces.

This is an example of a filter that performs the average of the values along a circle centred on a grid node:

```
11
.00000 .00000 .00000 .03571 .03571 .03571 .03571 .03571 .00000 .00000 .00000
.00000 .00000 .03571 .00000 .00000 .00000 .00000 .00000 .03571 .00000 .00000
.00000 .03571 .00000 .00000 .00000 .00000 .00000 .00000 .00000 .03571 .00000
.03571 .00000 .00000 .00000 .00000 .00000 .00000 .00000 .00000 .00000 .03571
.03571 .00000 .00000 .00000 .00000 .00000 .00000 .00000 .00000 .00000 .03571
.03571 .00000 .00000 .00000 .00000 .00000 .00000 .00000 .00000 .00000 .03571
.03571 .00000 .00000 .00000 .00000 .00000 .00000 .00000 .00000 .00000 .03571
.00000 .03571 .00000 .00000 .00000 .00000 .00000 .00000 .00000 .03571 .00000
.00000 .00000 .03571 .00000 .00000 .00000 .00000 .00000 .03571 .00000 .00000
.00000 .00000 .00000 .03571 .03571 .03571 .03571 .03571 .00000 .00000 .00000
```

The filters can be created with any external word-processor, should have the “.FIL” extension and should be saved as plain text.

Calculate Menu - Filtering

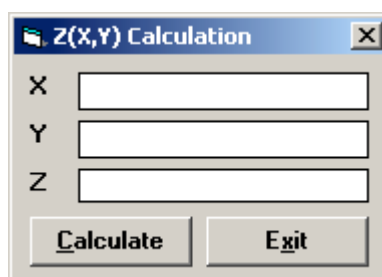
With this menu, the grid filtering is performed.

Execute Calculations Command

With this command, the grid filtering is performed using the chosen filter.
Use the print menu to view the results of the elaboration.

Z(X,Y) Calculation Command

With this command, one can evaluate the “z” value of any point of the surface; enter the coordinates of the point in the window and click the <Calculate> button.



The program calculates the required value using a bi-cubic splines interpolation algorithm, and displays the result in the "Z" field.

Volume Calculation Command

With this command, the programme calculates the volume (surface integral) of the whole grid, and shows it in a message box.

Print Menu - Filtering

The Print menu is used to configure the graphical output and plot the surface in Map, Wireframe View, or Solid View form.

For more information, see the Print Menu - ISOMAP – Grid Generation.

Chapter 13 - ISOMAP Menus - Grid Duplication

Grid Duplication (ISOMAP module)

This command enables one to duplicate a project, for example to allow parametric analyses. It can also be used to create a new grid from an existing one, changing the extension of the grid and the size of the mesh.

Procedure

- Select the “New Project” command from the “Project” menu
- Choose a new name for the project
- Select “Grid Duplication” in the “Operation” window
- Select the project to be duplicated
- Assign the new values of Xmin, Xmax, Ymin, Ymax and of the Mesh Size
- Select “Calculation” on the menu bar

Note: the X,Y values must be inside the ranges of the original grid.

Chapter 14 - ISOMAP Menus - DTM Import

DTM Import (ISOMAP module)

With this command, it is possible to import regular grid data from other programs and convert these into the ISOMAP format. A default ISOMAP format can be used, or a custom made filter can be developed on request. The data files must previously have been created, with a text editor such as Notepad, and have the “.ZRE” extension.

The structure of the ZRE files is quite simple: on the first line write the number of nodes on the X-axis, on the second line write the number of nodes on the Y-axis, on the third line write the mesh size (in metres) between two nodes, in the two next lines write the abscissa and ordinate of the first grid node in the bottom left corner.

The file can now be completed with the Z-values, column by column (left to right), each column in a bottom-up order. Each column of Z-values must be preceded by a line that contains the text “Column #”, where # is the column number. Once the file is saved, the import procedure can be started.

Procedure

- Select the “New Project” command from the “Project” menu
- Choose a new name for the project
- Select “Import ZRE file” in the “Operation” window
- Choose the ZRE file you want to import the grid from

Once confirmed the file name, the programme executes the conversion, then it directly activates the Print menu, because no further calculation must be performed.

Chapter 15 - ISOMAP Menus - VID Import

Import VID File (ISOMAP module)

This command enables one to import a file in VID format.

Procedure

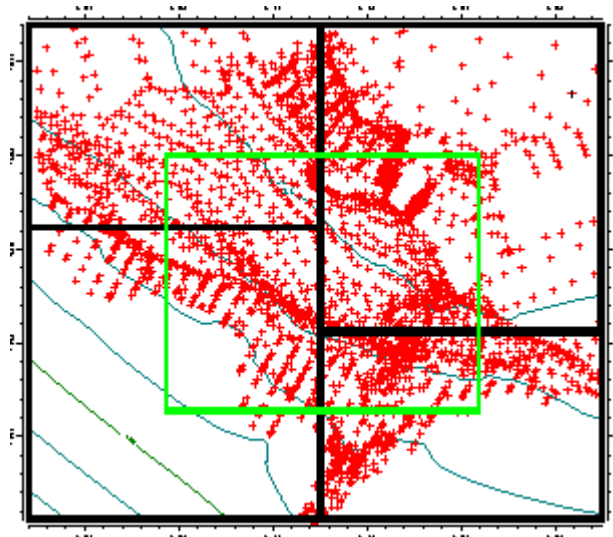
- Select the “New Project” command from the “Project” menu
- Choose a new name for the project
- Select “Import VID file” in the “Operation” window
- Choose the VID file you want to import the grid from

Once confirmed the file name, the programme executes the conversion, then it directly activates the Print menu, because no further calculation must be performed.

Chapter 16 - ISOMAP Menus - XYZ Import

Import XYZ file (ISOMAP module)

This command enables one to manage XYZ files. It is possible to join two or more files and, eventually, extract from them a partial area. This feature can be particularly useful when the area of interest (the green rectangle in the picture) crosses different, individual surveys (the black rectangles).



Procedure

- Select the “New Project” command from the “Project” menu
- Choose a new name for the project
- Select “Import XYZ file” in the “Operation” window
- Type the coordinates of the lower-left and upper-right corners of the new grid
- Type XYZ file names you want to import the points from

Once confirmed the file names, the programme executes the conversion, then it activates the Calculation menu.

Chapter 17 - ISOMAP menus - DXF Import

Import DXF file (ISOMAP module)

This command enables one to import a file in DXF format.

To correctly import a DXF file, it must have been saved as **Autocad release 12** file, the contour lines must be POLYLINES (LINES are not imported), and the elevation value of each polyline must have been embedded in the file.

The screenshot shows the 'Files DXF Import' dialog box. It features a title bar with the text 'Files DXF Import' and a 'Find DXF' button in the top right corner. Below the title bar is a large empty text area. To the left of this area are several input fields and buttons. The first section has a label 'Coastal lines layer' followed by an input field and an 'Import' button. The second section has a label 'Contour lines layer' followed by an input field and an 'Exit' button. Below these are several more input fields, each with a label: 'Mesh size', 'Point Distance', 'Z water', 'X min', 'Y min', 'X max', 'Y max', 'X water', and 'Y water'. Each label is followed by an input field.

The programme extracts polylines only from the declared layers ("Contour lines layers" fields), so those layers must contain all and only the polylines representing contour lines (so roads, buildings and any other object in

form of polyline must be removed from the declared layers before processing the file).

Once obtained a clean DXF file, the names of the layers (1 to 7 max) can be typed in the ("Contour lines layers" fields).

Some of the other fields in the window are mandatory:

- Mesh size: width (and height), in meters, of the square meshes of the grid which will be created. Remember the maximum grid size is 500x500 meshes;
- X,Y coordinates of the lower-left (Xmin, Ymin) and of the upper-right (Xmax, Ymax) corners of the new grid. Those four values must be exact multiples of the mesh size.

The "Point Distance" field is optional, but strongly suggested for speed and quality reasons. This value allows the programme to pick few points out of the polylines, which are often very densely populated, obtaining a more isotropic point distribution which brings to a faster and more robust elaboration.

A good value for this parameter is the average planimetric distance between the contour lines.

FREE WATER TABLES

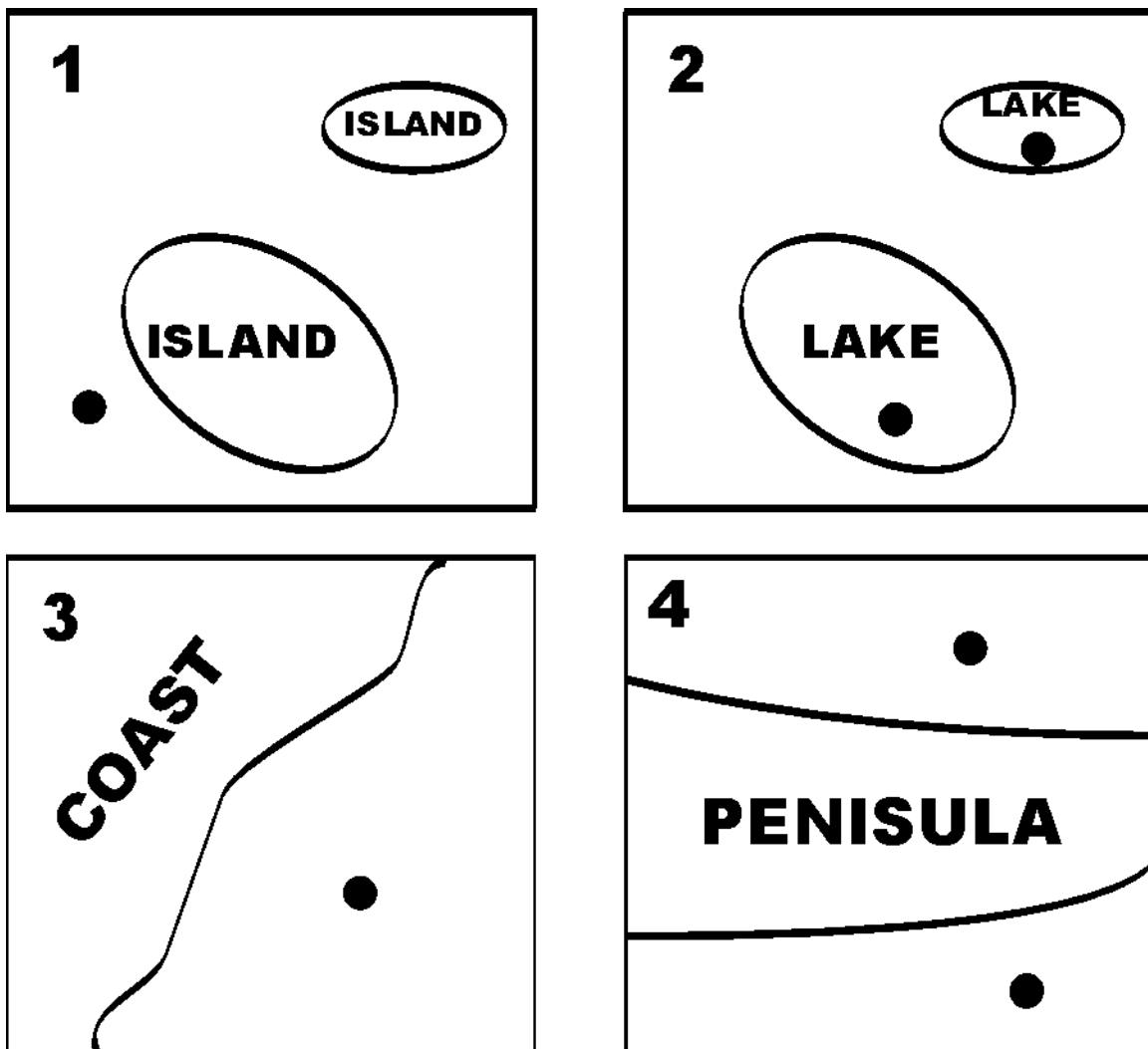
To get a more agreeable output in presence of lakes or sea, it is possible to use a simple trick to assign a constant value to the water surfaces.

Before importing the file, it is enough to add to the DXF file one or more coastal lines (see figure below), taking care that the closed lines are really closed (i.e. the first and the last points have the same coordinates) and the crossing lines surely exceed the rectangle defined by the lower-left and upper-right points previously typed.

Those lines must be placed on a dedicated layer.

Now we can compile the "Z water" field, typing the water table elevation; for graphical reasons, we suggest to choose a value slightly lower then the real value if this is an exact multiple of the contour line distance: for example, for the sea, use -0.1 instead of 0, to avoid generating random horizontal lines.

For each separated water table, a couple of coordinates "X water" and "Y water" must be typed, to tell the programme which side of the coastal lines the water is; for example, you could give the coordinates of the big black points in the figure below.



Procedure

- Select the “New Project” command from the “Project” menu
- Choose a new name for the project
- Select “Import DXF file” in the “Operation” window
- Choose the DXF file you want to import the grid from, and compile the required fields

Once confirmed, the programme executes the conversion, then it activates the Calculation menu.

Chapter 18 - ISOMAP menus - ASC Import

Import ASC file (ISOMAP module)

This command enables one to import a file in ASC format.

Procedure

- Select the “New Project” command from the “Project” menu
- Choose a new name for the project
- Select “Import ASC file” in the “Operation” window
- Choose the ASC file you want to import the grid from

Once confirmed the file name, the programme executes the conversion, then it directly activates the Print menu, because no further calculation must be performed.

Chapter 19 - INQUIMAP

Introduction to the module INQUIMAP

Most of the complex problems related to ground-water modelling can be solved with INQUIMAP.

It allows the geometric modelling of the water table and the insertion of one or several wells, flooded areas, barriers and impermeable barriers, recharge points and variations in permeability.

The obtained surfaces can be directly used to determine safe areas or to identify, in back-analysis terms, the position of the contamination sources. The calculation can be performed with the finite differences method (this allows the introduction of recharge areas and points with a fixed or lowered piezometric levels), as well as through the superimposition of effects (operating on a unconfined, confined or semi-confined aquifer, in steady or transient flow conditions).

The program reconstructs the isochronal lines by enveloping the flow lines that reach each well through a process of time-domain integration. It is thus possible to determine the protection areas around water wells for domestic use. In order to calculate the iso-concentration lines the programme utilises an analytical-numerical extension of the well-known dispersion and convection equations used for a plane water table to fit the context of an uneven water table. This problem can be analysed in terms of steady or continuous flows, following the development of the contamination in the time-domain. A solution for steady immission is also provided. The program also allows the flow-analysis through vertical sections.

Chapter 20 - INQUIMAP - Finite Differences

Finite Differences (INQUIMAP Module)

The numerical recalculation of the equilibrium conditions of an underground aquifer is performed with the finite differences method. This enables one to take into account all parameters that normally influence the behaviour of the piezometric surface. It is especially possible to define some areas where the hydraulic potential or flow capacity are constant and, obviously, to identify zones with different permeability.

The equations that describe the model demand that at each grid node that does not have a constant potential the flow, is governed by Darcy's law and its total is zero:

$$q + \sum (K * i * A) = 0$$

$$q + \sum_j (K_j * i_j * A_j) = 0$$

where:

q = constant flow

K = reciprocal of the average of the reciprocals of the permeability of the nodes

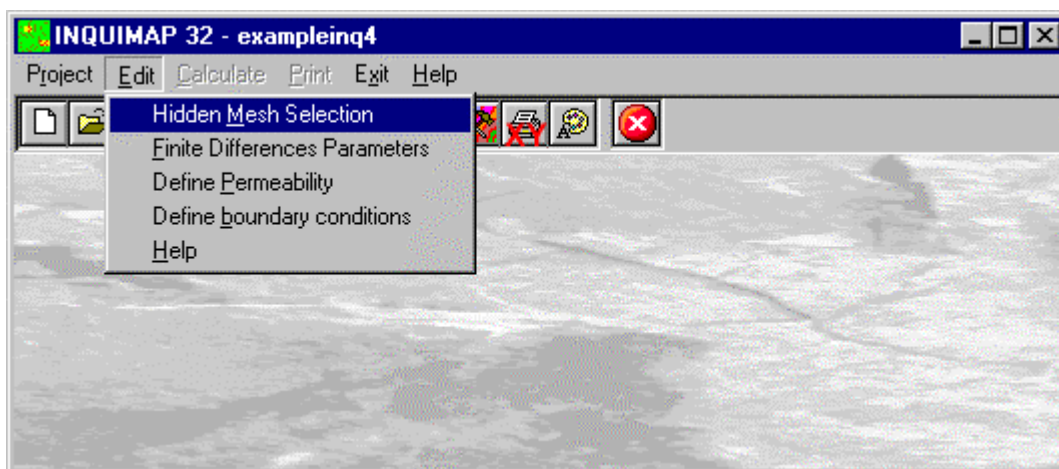
i = hydraulic gradient

A = variable or constant section with free or confined aquifers

The model is treated by solving with the Gauss-Seidel method one of the two systems present respectively free or confined aquifers

Edit Menu - Finite Differences

This menu is used to enter and edit input data used in the operations.



Hidden Mesh Selection Command

This command allows hiding some of the grid meshes.

For more information, see the "Hidden Mesh Selection - ISOMAP - Grid Generation"

Finite Differences Parameters Command

Here the parameters are defined for the recalculation of the surface with the finite differences method.

The "Finite differences parameters" Dialogue Box

In "Finite differences parameters" dialogue windows the following data have to be entered:

FINITE DIFFERENCES PARAMETERS	
Number of iterations	5000
Minimum error	0
Level of aquifer bed [m]	0
Aquifer thickness [m]	0

It is the number of calculations necessary to arrive at a condition of near equilibrium. Please note that stopping the calculation at a too low number of iterations (that is to say when one has not yet reached convergence) is equivalent to accepting a non-stationary flow condition. As it is not possible to deduce a

- *Number of iterations*: it is the number of calculations one retains as necessary in order to attain a state of equilibrium. As it is not possible to deduce a relation between time and number of iterations, one can not take a reduced number of iterations to simulate a condition of non-stationary flow. We suggest a number of iterations varying from 10 to 20 times the number of meshes that make up the perimeter of the grid, according to the degree of perturbation induced by the new conditioning of the problem.
- *Minimum error*: at present this field is not used.
- *Level of aquifer bed*: this parameter should only be used for free aquifers, as in this case the flow section used by the calculation is dependent from both the water table height as from the depth of the impermeable bed. The depth of the bed has, however, no influence on confined aquifers, as the flow quantities do not depend on the height of the water table from the impermeable bed but from the hydraulic gradient. The calculation assumes an aquifer lying on a horizontal plane placed at the depth indicated in this field.

- *Aquifer thickness*: when one is considering a free aquifer the thickness should be zero. When the thickness is larger than zero the program will consider the aquifer as confined and will use the appropriate calculation formulae.

Define Permeability Command

With this command the grid, used to define the permeabilities of the different zones, will be drawn on-screen. When there are large discontinuities in permeabilities, like in the case of impermeable barriers, it is best to use mesh sizes as small as to represent the barrier at least two meshes thick. Otherwise there might be, on the border between areas with different values, small defects in the graphical representation due to the attempt to render continuous the surface.

The meshes that had permeability values assigned to them are shown in a different colour for each permeability value. By moving the mouse the permeability value of that mesh is shown in the Value field.

Let us see how to associate a permeability value to a mesh. On the right hand side of the screen one can see the commands for this window:

- <Value to enter>: click in this field and enter permeability, hence press ENTER. The value entered will be rewritten with the colours that characterises the area to which it will be associated. To assign values to the mesh there are three methods: click with the left button and assign the value to the single mesh; by dragging the mouse the value will be assigned to all the meshes traversed; clicking with the right button will assign the value to all zones with homogeneous conditions.
- <Cancel edit>: cancels the last edit operation.
- <Save>: saves the data entered or edited and passes on to the next phase.
- <Cancel>: closes the window without saving the data or executing the command.

Define Boundary Conditions Command

With this command one can select the type of conditioning for the model. With the expression conditioning of the model we mean the set of operations necessary to define the conditions that have to be satisfied in the hydrodynamic re-equilibration phase of the model.

The calculation procedures tend to reconstruct the geometry of the water table surface in such a way as to respect the equilibrium conditions, that is to say in accordance with Darcy's law. Therefore the flow through a determined section is proportional to the permeability gradient, and the total flow in a node should be zero (taking also into account flow due to water removal).

It is clear therefore that in order to obtain a reliable result it is necessary to define the boundary conditions, at such a distance from the structures as not to be influenced by these. To do so one can use the Initial Values option that assigns to a set of nodes of the grid the initial value in the initial project that is to say with the values the water table had before eventual water removal.

It is clear that the set of nodes should perforce contain the whole border (or in some cases only a part in the case when a part of the border is made up of impermeable materials, and these parts should be defined as such). The program puts, as already selected with initial values the nodes at the border of the grid. It is however possible to define as initial values, some internal point, typically the lowest levels of the water table, when one knows that these minima are due to pumping which is in operation at the moment of the measurement of the water table. These points should be indicated in some way to the model, and if the natural water table can not be reconstructed without any pumping operation, it is at least necessary to indicate its presence with this option. In all cases the nodes characterised by the Initial values are considered as nodes with a constant potential, and their values will not be modified when the model is re-equilibrated.

Similar to those just described are the cases of Constrained Lowering, whose constant potential is assigned to the meshes selected, where their value will be the measured value diminished by a constant. Similarly the Constrained Level will have a value given by the operator. Also in the latter two cases their values will not be modified when the model is re-equilibrated.

It is important to note that it can be advisable to perform a first phase of re-equilibration of the model taking into account only the initial values and hence impose only in a second moment the constrained lowering and constrained levels, this because the level of hydrodynamic equilibrium does not necessarily coincide with the extrapolated value when the project was started, and thus the constrained lowering coincide in these two cases with a negative influence on the flows.

This is obviously not the case when the constrained level is a level that coincides with the topographical surface, for example when one wants to lower the water level to below a quarry floor; in that case it is clear that the water level should be at that determined height, apart from the amount of water that should be pumped to obtain that result.

In the case of pre-determined flow (positive for removal of water) the value influences on the total balance of the flows at the nodes and the value resulting from the re-equilibration is no longer influenced by the initial value: in

this case therefore it is no longer necessary to intervene on an aquifer equilibrated beforehand. Please note that in the case of pre-determined flow, often the lowering of the conditions of equilibrium in the corresponding nodes is often strongly underestimated (and only partially nearby); this is due to the fact that it is not possible to explicitly size the radius of the well, therefore the well radius is implicitly set to correspond to about one mesh size. For the same reason, in case of constrained lowering, the global lowering of the aquifer is overestimated (while a lowering is only correct at the well). From this one can deduce that to have a correct result, both at a large or small scale, it can be a good idea to perform the calculation by using pre-determined flows and thus in a second phase assign the effective amount of lowering of the level in the well (calculated in respect to the re-equilibrated water table without wells), indicating as nodes with constant initial potential the eight nodes around it. In this way the lowering of the water table can not be extended to the whole aquifer, and the lowering is only obtained at the well. This procedure is particularly useful when one wants to calculate isochrones, as a flattened water table near the well tends to generate reduced isochrones in comparison with reality.

With the **Recalculable** option one can liberate the selected meshes from previous constraints.

The meshes, to which a conditioning was applied previously, are shown with a different colour for each type of conditioning and value.

By moving the mouse on the grid, the conditioning and the value of the current mesh is shown in the field, below the coordinates. Let us see how these conditionings can be defined. The commands for this window are placed on the right hand of the screen.

- **Conditioning Table:** select from this table the type of conditioning to assign to the meshes by clicking on it. Define in the field "Value to enter" to be associated to the meshes and press the ENTER key. This procedure is, obviously, not necessary when one selects Initial values, as the program knows the initial value of each mesh, it is sufficient to click on Initial values and select the meshes that can not be modified during calculation. To assign a conditioning to the meshes of the grid there are three methods: by clicking on the left button the conditioning is assigned to this single mesh; by dragging the mouse the conditioning, previously assigned, is extended to all meshes traversed by the mouse; by clicking the right button the conditioning, previously assigned, is extended to all areas having a homogeneous condition.
- **<Value to enter>:** after selecting the type of conditioning click in this field and enter the value to be given to the meshes and press ENTER. The value entered is written in the colour that will characterise this value in the grid drawing. To assign a conditioning to the meshes of the grid there are three methods: by clicking on the left button the conditioning is assigned to this single mesh; by dragging the mouse the conditioning, previously assigned, is extended to all meshes traversed by the mouse; by clicking the right button the conditioning, previously assigned is, extended to all areas having a homogeneous condition..
- **<Cancel edit>:** cancels the last edit operation.
- **<Save>:** Saves the data entered and edited and passed on to the next phase.
- **<Cancel>:** Closes the window without saving the data and without executing the command.

As said before, normally only the nodes on the border of the grid have fixed initial conditions. This procedure tends, however, to eliminate the areas of variability within the grid, forcing the water table to its regional trend. This is a useful procedure when one has little information on the real form of the aquifer.

Contrariwise, when information is plentiful and enhance areas of variability the procedure, to be used to recalculate the surface so as to be congruent with reality, becomes more complex.

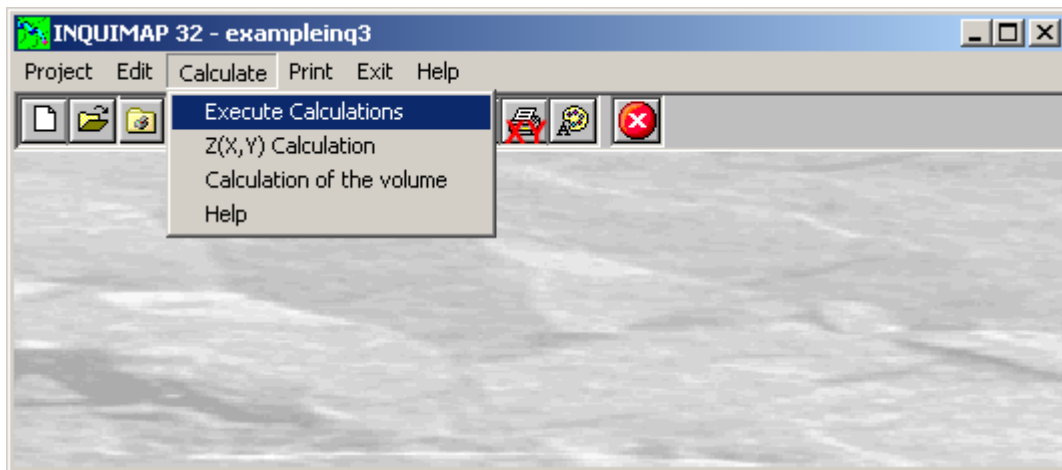
First of all the cause why the phreatic surface assumes a certain form should be understood. This can depend on lateral variations of permeability or the presence of pre-existing wells. In the first case it is preferable to set as fixed nodes those that are on the grid edge, or on two opposing sides only, whenever conditions require it, trying to make the water table converge to its natural condition by using lateral variation of permeability. In case the local form of the aquifer surface is determined by wells that were activated in the past it is preferable to define as fixed both the nodes at the grid edge as well as the nodes, or zone, near to these wells.

Thus, it should be clear by now why the correct definition of local variability of the aquifer is important. Fixing a node to make sure that the re-calculation does not force the water table to its regional trend, when that local trend depends from the underground geometry and not from a well. This will have as effect that during the re-calculation phase, to define the new water level due to other wells entering production, this level is forced to a height that does no long represent the true height.

It is a good idea to perform a cycle of iterations to equilibrate the water table before simulating the placement of new wells to distinguish the effects of deformation of the phreatic surface due to re-calculation from that of the new wells. With, for example, three calculations that represent the measured water table, the water table re-equilibrated through finite differences and the water table after the new wells have gone on stream.

Calculate Menu - Finite Differences

With this menu one can calculate the surface.

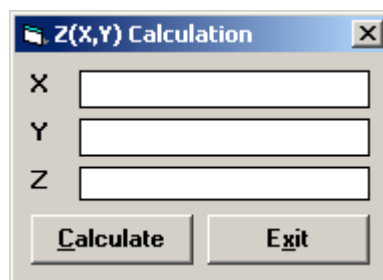


Execute Calculations Command

With this command, the calculation is performed. Use the print menu to view the results of the elaboration.

Z(X,Y) Calculation Command

With this command, one can evaluate the "z" value of any point of the surface; enter the coordinates of the point in the window and click the <Calculate> button.



The program calculates the required value using a bi-cubic splines interpolation algorithm, and displays the result in the "Z" field.

Volume Calculation Command

With this command, the programme calculates the volume (surface integral) of the whole grid, and shows it in a message box.

Print Menu - Finite Differences

The Print menu is used for configuring the graphic output and for plotting the surface in form of Map, Wireframe View, or Solid View.

For more information, see the "Print Menu – ISOMAP – Grid Generation"

Chapter 21 - INQUIMAP - Superimposition of Effects

Superimposition of Effects (INQUIMAP Module)

The superimposition of effects operation is a simpler method in respect to the finite elements method. It is based, as a matter of fact, on the hypothesis that the aquifer, around each well where operations start, is made of an isotropic and homogenous medium. In a point of the water table, the depressions are due to superimposition of the effects of all the wells which radius of influence is larger than the distance to the well. This can be calculated with the following equations, respectively for free and confined aquifers:

$$H^2 - h^2 = Q / (K\pi) \ln(R / r)$$

or

$$H - h = Q / (2 K \pi E) \ln(R / r)$$

where:

H = height of the undisturbed water table from the impermeable stratum;

h = height of the water table when pumping takes place;

Q = pumping flow;

K = permeability around the well;

R = radius of influence of the well;

r = distance corresponding to height h;

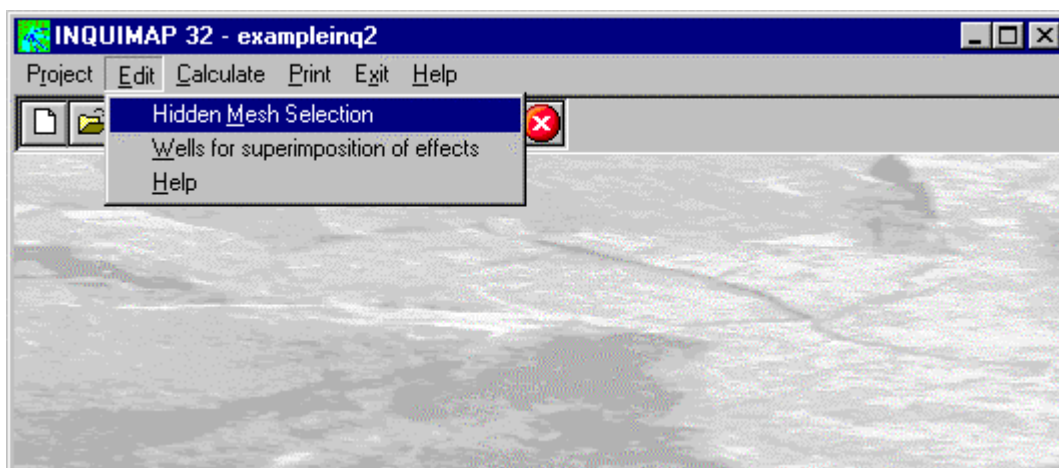
E = thickness of the confined aquifer.

The conditions that satisfy complete the formulae indicated above are the following:

- complet wells;
- homogeneity of the hydrogeological parameters around the each well.

Edit Menu - Superimposition of Effects

This menu is used to enter and edit input data used in the operations.



Hidden Mesh Selection Command

This command allows hiding some of the grid meshes.

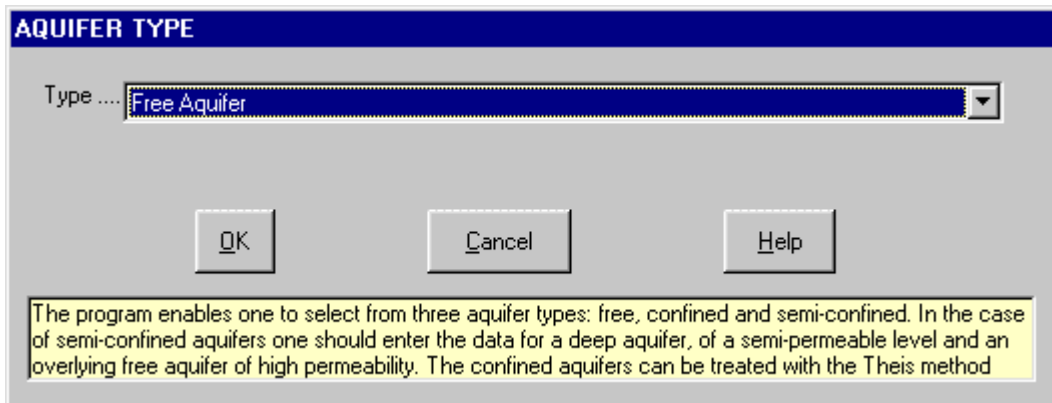
For more information, see the "Hidden Mesh Selection - ISOMAP Menus - Grid Generation"

Wells for Superimposition of Effects Command

With this command one can position a producing well on the surface of the water table calculated previously (original project).

The "Aquifer type" Dialogue Box

The "Aquifer type" dialogue window enables one to select the type of aquifer where the producing wells are installed; apart from the aquifer, different parameters will be required to describe the area and the wells.



The program considers three different types of aquifers: free, semi-free and confined. Confined aquifers can be treated with the method by Jacob for stationary flow or the method by Theis with transient flow. Note that apart from the type of aquifer selected the well is considered to be complete with the completion bottom in the impermeable stratum.

Please note that it is preferable, that when on this project the Draw Isochrones operation should be performed, that the wells will be located exactly on a grid node, as these are the points analytically determined by the calculation. In case the well, or the minimum point, does not coincide with a node one will have a loss of resolution in the calculation as it will be approximated according to the trend of the water table in the surrounding nodes, with a an error that increases with the increase of the ratio between the mesh width and the radius of influence of the well.

Free aquifers

In the case of a free aquifer the well is considered to have an open completion throughout the aquifer's thickness.

The "Select wells" dialogue window has the following five buttons:

<New>: by clicking on this button the window to enter the well's characteristics is shown:

- *Well name*: this is an optional information to give the user a quick identification of the well.
- *Abscissa*: the abscissa, expressed in meters, of the planimetric position of the well in the same coordinate system used to construct the grid; it is mandatory that the well coordinates correspond to a grid node coordinate.
- *Ordinate*: the ordinate, expressed in meters, of the planimetric position of the well in the same coordinate system used to construct the grid; it is mandatory that the well coordinates correspond to a grid node coordinate.
- *Thickness of undisturbed aquifer*: as the formulae for the re-calculation of the cone of influence presupposes that the well bottom is completed in the impermeable sub-stratum it is necessary to enter the Thickness of the undisturbed aquifer, this is before the well went on stream. It should be expressed in meters.
- *Flow*: the flow should be expressed as cubic metres per second.
- *Permeability*: the formulae used presume the existence of homogeneous and isotropic medium in the area covered by the cone of influence. Here one has to enter the average local permeability around the well. Please note that with the superimposition of the effects, the discrete differences in permeability are ignored.
- *Well radius*: This is important to determine the effective depression of the water in the well. It should be expressed in metres.
- *Radius of influence*: it is the radius of maximum extension of the cone of influence; it is derived from pumping tests.

When one confirms the data one is returned to the "Select wells" window, wherein the data pertaining to the well shall be entered.

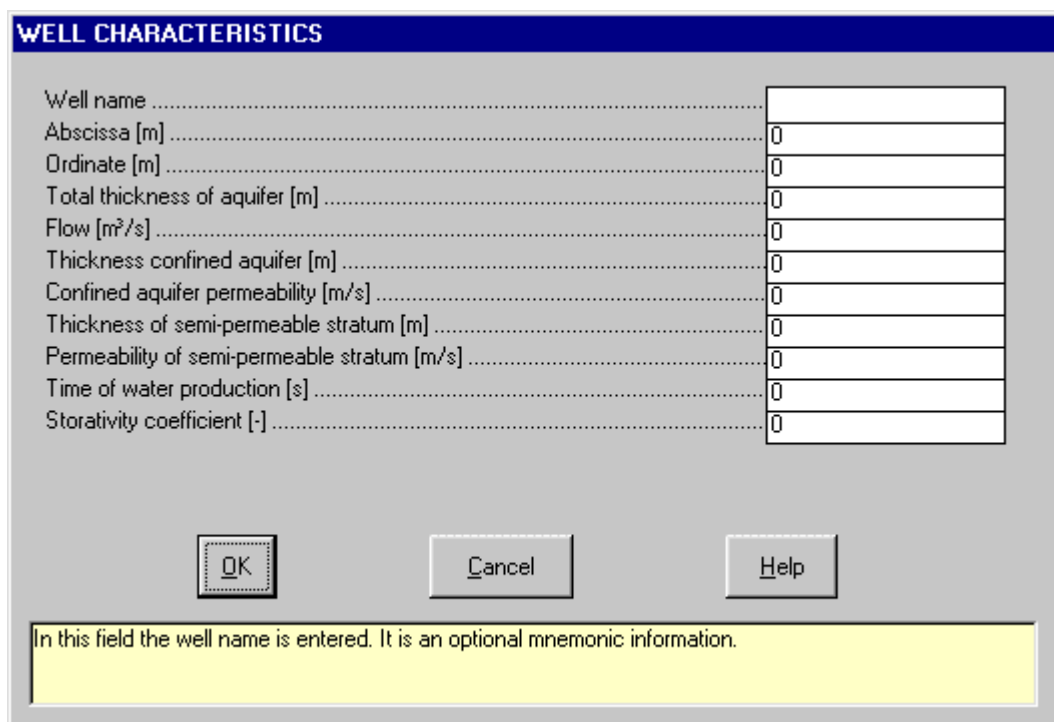
- <Modify>: by selecting one of the wells, defined previously, and clicking on this button the window showing the data of the well is shown so one can edit these.
- <Delete>: deletes the information of the selected well.
- <Ok>: saves the data that were entered and closes the window.
- <Cancel>: closes the window without saving the data.

Semi-confined aquifer

In the case of a semi-confined aquifer the well is considered to have an open completion but only in the semi-confined part of the aquifer. The flow components, through the semi-impermeable layer, are assumed to be vertical only.

The "Well selection" dialogue window has the five buttons:

<New>: by clicking on this button the following window is shown where the characteristics of the well are entered:



WELL CHARACTERISTICS

Well name

Abscissa [m]

Ordinate [m]

Total thickness of aquifer [m]

Flow [m³/s]

Thickness confined aquifer [m]

Confined aquifer permeability [m/s]

Thickness of semi-permeable stratum [m]

Permeability of semi-permeable stratum [m/s]

Time of water production [s]

Storativity coefficient [-]

In this field the well name is entered. It is an optional mnemonic information.

- *Well name*: this is an optional information to give the user a quick identification of the well.
- *Abscissa*: the abscissa, expressed in meters, of the planimetric position of the well in the same coordinate system used to construct the grid; it is mandatory that the well coordinates correspond to a grid node coordinate.
- *Ordinate*: the ordinate, expressed in meters, of the planimetric position of the well in the same coordinate system used to construct the grid; it is mandatory that the well coordinates correspond to a grid node coordinate.
- *Total thickness of aquifer*: expressed in metres. It is the sum of the thickness of the confined aquifer and the semi-impermeable layer, plus the distance from the free undisturbed water table to the top of the semi-impermeable bed.
- *Flow*: the flow should be expressed as cubic metres per second.
- *Thickness of confined aquifer*: expressed in metres. One assumes that this value is constant around the well and the horizontal stratification. The indicated thickness will also be used for the height of the part of the well where an open completion is present.
- *Permeability of confined aquifer*: the formulae we used assume the presence of a homogeneous and isotropic medium for the whole extension of the cone of influence. Here one has to enter the average local permeability around the well. Please note that with the superimposition of the effects the discrete differences in permeability are ignored. Because of the presence of the impermeable layer it is not possible to determine transmissivity directly, hence thickness and permeability should be entered explicitly.
- *Thickness of semi-impermeable layer*: to be expressed in metres. The flow through the semi-impermeable layer is supposed to be sub-horizontal.
- *Permeability of semi-impermeable layer*: the formulae we used assume the presence of a homogeneous and isotropic medium for the whole extension of the cone of influence. Here one has to enter the average local permeability around the well. Please note that with the superimposition of the effects, the discrete differences in permeability are ignored. The permeability of the free aquifer part will be taken as to be higher than that of the semi-impermeable layer so that the geometry of the upper aquifer will not be influenced by water production.
- *Duration of water production*: the duration of the water production should be expressed in seconds.
- *Coefficient of storativity*: please remember that the coefficient of storativity, the kinetic porosity and the effective porosity have approximately the same value in a free aquifer; these values can differ several orders of magnitude for confined and semi-confined aquifers. The coefficient of storativity is referred to the deep, semi-confined aquifer.

When one has confirmed the input, one returns to the "Select wells" window where the characteristics of each well are entered.

- <Modify>: by selecting one of the wells, defined previously, and clicking on this button the window showing the data of the well is shown, so one can edit these.
- <Delete>: deletes the information of the selected well.
- <Ok>: saves the data that were entered and closes the window.
- <Cancel>: closes the window without saving the data.

Confined aquifer (stationary flow - Jacob method)

The "Well selection" dialogue window has the five buttons:

<New>: by clicking on this button the following window is shown where the characteristics of the well are entered:

WELL CHARACTERISTICS	
Well name	<input type="text"/>
Abscissa [m]	<input type="text" value="0"/>
Ordinate [m]	<input type="text" value="0"/>
Flow [m ³ /s]	<input type="text" value="0"/>
Transmissivity [m ² /2]	<input type="text" value="0"/>
Well radius [m]	<input type="text" value="0"/>
Radius of influence [m]	<input type="text" value="0"/>

In this field the well name is entered. It is an optional mnemonic information.

- *Well name*: this is an optional information to give the user a quick identification of the well.
- *Abscissa*: the abscissa, expressed in meters, of the planimetric position of the well in the same coordinate system used to construct the grid; it is mandatory that the well coordinates correspond to a grid node coordinate.
- *Ordinate*: the ordinate, expressed in meters, of the planimetric position of the well in the same coordinate system used to construct the grid; it is mandatory that the well coordinates correspond to a grid node coordinate.
- *Flow*: the flow should be expressed as cubic metres per second.
- *Transmissivity*: one assumes that this value is constant around the well and the horizontal stratification. Here one has to enter the average local permeability around the well. Please note that with the superimposition of the effects, the discrete differences in permeability are ignored.
- *Well radius*: should be expressed in metres.
- *Radius of influence*: it is the radius of maximum extension of the cone of influence; it is derived from pumping tests.

When one confirms the data one is returned to the "Select wells" window, wherein the data pertaining to the well shall be entered.

- <Modify>: by selecting one of the wells, defined previously, and clicking on this button the window showing the data of the well is shown so one can edit these.
- <Delete>: deletes the information of the selected well.
- <Ok>: saves the data that were entered and closes the window.
- <Cancel>: closes the window without saving the data.

Confined aquifer (transitory flow - Theis method)

The "Well selection" dialogue window has the five buttons:

<New>: by clicking on this button the following window is shown where the characteristics of the well are entered:

WELL CHARACTERISTICS	
Well name	<input type="text"/>
Abscissa [m]	<input type="text" value="0"/>
Ordinate [m]	<input type="text" value="0"/>
Transmissivity [m ² /s]	<input type="text" value="0"/>
Flow [m ³ /s]	<input type="text" value="0"/>
Time of water production [s]	<input type="text" value="0"/>
Storativity coefficient [-]	<input type="text" value="0"/>

In this field the well name is entered. It is an optional mnemonic information.

- *Well name*: this is an optional information to give the user a quick identification of the well.
- *Abscissa*: the abscissa, expressed in meters, of the planimetric position of the well in the same coordinate system used to construct the grid; it is mandatory that the well coordinates correspond to a grid node coordinate.
- *Ordinate*: the ordinate, expressed in meters, of the planimetric position of the well in the same coordinate system used to construct the grid; it is mandatory that the well coordinates correspond to a grid node coordinate.
- *Transmissivity*: the formulae we used assume the presence of a homogeneous and isotropic medium for the whole extension of the cone of influence. Here one has to enter the average local permeability around the well. Please note that with the superimposition of the effects the discrete differences in permeability are ignored.
- *Flow*: should be expressed in cubic metres per second
- *Duration of water production*: the duration of the water production should be expressed in seconds.
- *Coefficient of storativity*: please remember that the coefficient of storativity, the kinetic porosity and the effective porosity have approximately the same value in a free aquifer; these values can differ several orders of magnitude for confined and semi-confined aquifers. The coefficient of storativity is referred to the deep, semi-confined aquifer.

One has confirmed the input one returns to the "Select wells" window, where the characteristics of each well are entered.

- <Modify>: by selecting one of the wells, defined previously, and clicking on this button the window showing the data of the well is shown so one can edit these.
- <Delete>: deletes the information of the selected well.
- <Ok>: saves the data that were entered and closes the window.
- <Cancel>: closes the window without saving the data.

Calculate Menu - Superimposition Effects

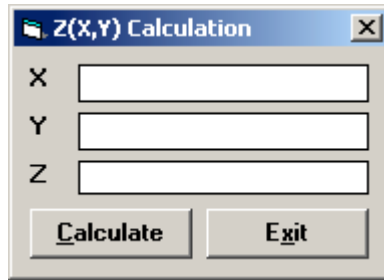
With this menu one can calculate the surface.

Execute Calculations Command

With this command, the calculation is performed. Use the print menu to view the results of the elaboration.

Z(X,Y) Calculation Command

With this command, one can evaluate the "z" value of any point of the surface; enter the coordinates of the point in the window and click the <Calculate> button.



The program calculates the required value using a bi-cubic splines interpolation algorithm, and displays the result in the "Z" field.

Volume Calculation Command

With this command, the programme calculates the volume (surface integral) of the whole grid, and shows it in a message box.

Print Menu – Superimposition Effects

The Print menu is used for configuring the graphic output and for plotting the surface in form of Map, Wireframe View, or Solid View.

For more information, see the "Print Menu – ISOMAP – Grid Generation"

Chapter 22 - INQUIMAP - Trace Isochrones

Draw Isochrones (INQUIMAP Module)

The re-construction of the isochrones is obtained by enveloping the flow lines; these are constructed from each well and extended just to the time interval that characterises the isochrone value.

The problem of the reconstruction of the flow lines is represented by a typical Cauchy problem, that consists of the reconstruction of continuous functions, continuously derivable from the initial conditions and the first derivative. The initial conditions are given by the position in time $t=0$, the coordinates of the well, while the first derivative, that is to say the velocity, is given by the gradient multiplied with the ratio between permeability and kinetic porosity.

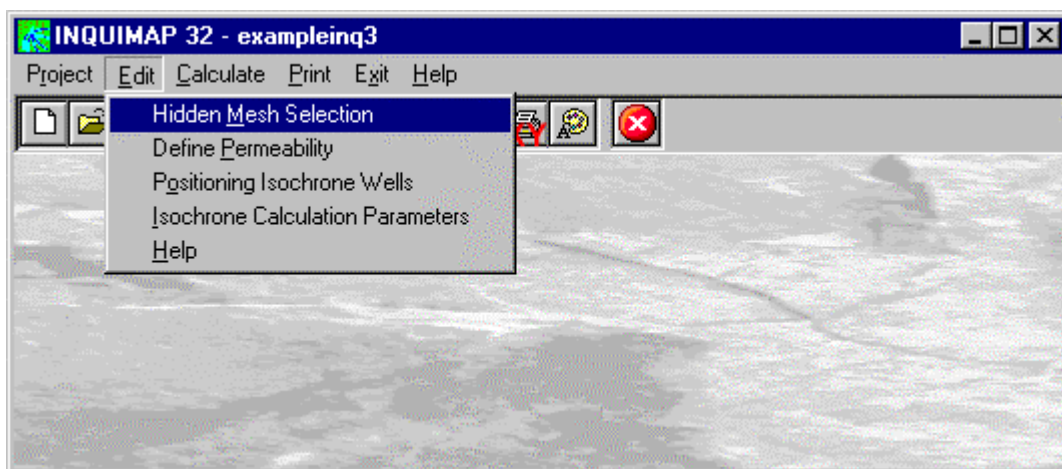
The problem is solved by Heun's method, which is part of the Runge-Kutta family of methods and unites a remarkable speed of calculation to an excellent degree of convergence.

The integration is done on equally spaced points placed on concentric circles around the well for two motives:

1. obtain a more homogeneous covering in all directions, which is a fundamental factor for a complete reconstruction of the area to be protected;
2. compensates for the fact that the phreatic surface, constructed with bi-cubic splines, is continuous and continuously derivable in all its points and especially at wells where, as these are minimum points, the surface is tangent to a horizontal surface and hence renders velocity zero, that on the contrary in these points, correlated to the physical problem. there is a maximum.

Edit Menu - Trace Isochrones

This menu is used to enter and edit input data used in the basic operations.



Hidden Mesh Selection Command

This command allows hiding some of the grid meshes.

For more information, see the "Hidden Mesh Selection - ISOMAP - Grid Generation"

Define Permeability Command

With this command the grid, used to define the permeabilities of the different zones, will be drawn on-screen. For more information, see the "Define Permeability Command - INQUIMAP Menu – Finite Differences"

Position Isochrones Wells Command

With this command the positions of the wells on the grid are defined. It is absolutely necessary that the well positions coincide with the grid nodes that approximate as much as possible the real position.

Whenever the well is not positioned on a node, the program automatically moves the well's position to the nearest node coordinates.

If the well's position does not match a minimum point the program will trace isochrones uphill.

The "Positioning of wells" Dialog Box

In "Positioning of wells" dialogue windows the following data have to be entered:

Point	X Coord. [m]	Y Coord. [m]
1		
2		
3		
4		
5		
6		
7		
8		
9		
10		
11		
12		
13		
14		
15		

Abscissa of wells from the arbitrary origin used.

OK Cancel Insert Delete Help

- *X Coord.*: abscissa of wells from the arbitrary origin used.
- *Y Coord.*: ordinate of wells from the arbitrary origin used.

Isochrone Calculation Parameters Command

With this command one can define the parameters for the calculation of the isochrones.

The "Isochrone Calculation Parameters" Dialogue Box

In the "Isochrone Calculation Parameters" dialogue window one has to enter the following data:

ISOCHRONE CONTRUCTION PARAMETERS	
Initial circle radius [m]	2
Kinetic porosity [-]	0.2
Isochronous value # 1 [s]	2592000
Isochronous value # 2 [s]	5184000
Isochronous value # 3 [s]	
Isochronous value # 4 [s]	

OK Cancel Help

The starting points of the isochrones are on circumferences that have the radius indicated, centred on the nodes where wells are located. These parameters are necessary to start the flow lines along directions of maximum dip of the aquifer and, are as much as possible, evenly spaced. This hypothesis is conservative

- *Initial circle radius*: the starting points of the isochrones lie on nodes defined as the position of the wells through the command of this menu. This parameter is necessary to start the flow lines along the directions of maximum dip of the aquifer, possibly equally spaced. This hypothesis is necessary as the surface, that is continuously derivable around the wells-nodes is horizontal here with a velocity about zero. Leaving the radius of starting circle equal to zero it is possible to make the program draw isochrones uphill; to calculate downhill one should define a negative kinetic porosity value. It is mandatory that the starting point does not coincide with a well.
- *Kinetic porosity*: the kinetic porosity is a non-dimensional parameter comprised between 0 and 1 that represents the ratio between the mean effective flow and the speed according to Darcy, approximately equivalent to effective porosity; the latter represents the ratio between volume of water in an aquifer and the total amount of water in the sample. The kinetic porosity is a quite important parameter as the effective flow velocity is inversely proportional to it, according to the formula $v=ki/e$, where "v" is the velocity, "k" permeability and "e" the kinetic porosity.
- *Isochrone value*: up to four time values are allowed (expressed in seconds) to trace the isochrones and/or flow lines. The two values proposed by the program are (in seconds) respectively equal to 30 and 60 days.

Calculate Menu - Trace Isochrones

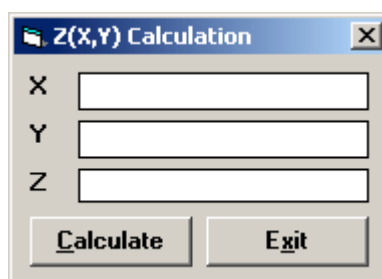
With this menu one can calculate the surface.

Execute Calculations Command

With this command the program executes the isochrones calculation. Use the print menu to view the results of the elaboration.

Z(X,Y) Calculation Command

With this command, one can evaluate the "z" value of any point of the surface; enter the coordinates of the point in the window and click the <Calculate> button.



The dialog box titled "Z(X,Y) Calculation" contains three input fields labeled X, Y, and Z. Below the fields are two buttons: "Calculate" and "Exit".

The program calculates the required value using a bi-cubic splines interpolation algorithm, and displays the result in the "Z" field.

Volume Calculation Command

With this command, the programme calculates the volume (surface integral) of the whole grid, and shows it in a message box.

Print Menu - Trace Isochrones

The Print menu is used for configuring the graphic output and for plotting the surface in form of Map, Wireframe View, or Solid View.

For more information, see the "Print Menu – ISOMAP – Grid Generation"

Chapter 23 - INQUIMAP - Calculation Concentrations

Calculation Concentration (INQUIMAP Module)

The problem of the iso-concentration calculation is resolved with an analytical-numerical method based on a few simple hypothesis: the presence of an aquifer, thin in respect to the distance the contaminant has travelled; this causes a nearly instantaneous diffusion along the vertical. The motion and diffusion components are considered sub-horizontal, without vertical exchanges.

The pollution, assumed to radiate from a point, can be of three types: instantaneous, continuous (when the pollution extends in time) or stationary (continuous pollution calculated continuing infinitely in time).

The calculation method is based on an analytical calculation for the case of the plane aquifer in a homogeneous isotropic medium, adapted to the real situation with a geometrical transformation that deforms the originally parallel flow lines to let them coincide with the real flow lines.

The result is therefore analytically exact when one uses a plane aquifer; it is a good approximation in the case the aquifer is regular at the well and deformed downhill (typical the case of a drainage well) while the approximation is poor when at the well location the aquifer is quite disturbed.

When making documentation for a third party we always advise to use the classical approach, amply documented in literature when performing calculations on a plane aquifer; the procedure to be used to adapt a real situation is however an experimental procedure, not supported by theoretical documentation in literature. We advise therefore to use it only to acquire a better understanding of the physics of the problem.

The calculation of the iso-concentrations is performed through numerical integration of the classical equation for transport and diffusion:

$$\partial c / \partial t = k_x \partial^2 c / \partial x^2 + \dots + v_x \partial c / \partial x + \dots + s$$

where:

c = value of concentration

t = time

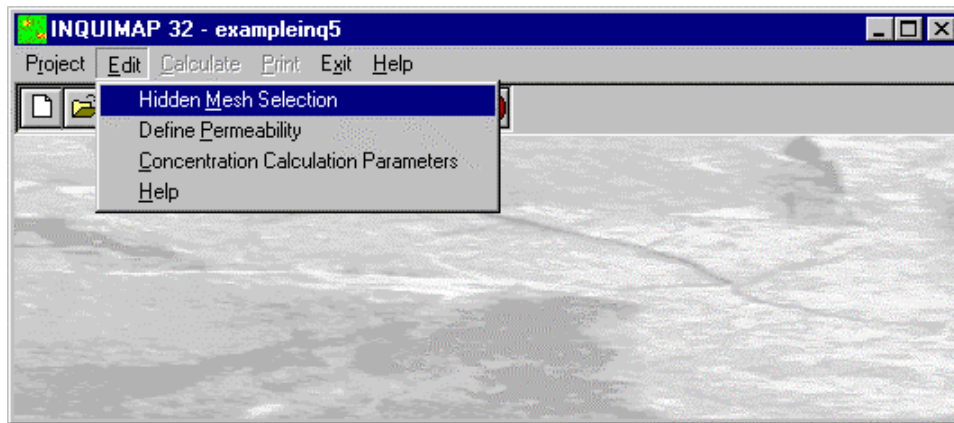
k = dispersion coefficient

s = well term

The mechanical dispersion coefficient is taken to be invariable in time and to be anisotropic, inasmuch it is determined by the product of effective velocity with two terms of dispersion, a longitudinal and a transversal one.

Edit Menu - Calculation Concentrations

This menu is used to enter and edit input data used in the operations.



Hidden Mesh Selection Command

This command allows hiding some of the grid meshes.

For more information, see the "Hidden Mesh Selection - ISOMAP Menus - Grid Generation"

Define Permeability Command

With this command the grid, used to define the permeabilities of the different zones, will be drawn on-screen.

For more information, see the "Define Permeability Command - INQUIMAP Menu – Finite Differences"

Concentrations Calculation Command

With this command one can define the parameters necessary to calculate the iso-concentration curves.

The "Iso-concentration parameters" Dialogue Box

In the "Iso-concentration parameters" dialogue window the following data must be entered:

ISO-CONCENTRATION PARAMETERS	
Type of immission	Stationary
Abscissa poll. source [m]	0
Ordinate poll. source [m]	0
Flow poll. [g/s/m; ist=>g/m]	0.01
Kinetic porosity [-]	0.2
Longitudinal dispersivity [m]	100
Lateral dispersivity [m]	10
Immission duration [d]	1

OK Cancel Help

The program enables one to calculate the isoconcentration curves under three different conditions of pollutant immission: instantaneous, continuous or stationary (this coincides with the continuous case infinite in time).

- *Type of immission:* three different types of pollutant immission have been foreseen. Instantaneous pollution: the hypothesis of perfect miscibility of the pollutant in case of an instantaneous pollution considers an aquifer of reduced thickness in respect to the horizontal extent, wherein the vertical dilution of the contaminant is practically immediate and thus would be equally concentrated for each metre of aquifer thickness; the motion and diffusion components are considered to be sub-horizontal, without vertical exchanges and therefore the pollutant flow should be expressed in grams/metre. Instantaneous Pollution: This is to be used when the pollution is prolonged in time. The program calculates the situation at different, sequential, times. Stationary pollution: continuous pollution calculated as to last into infinity.
- *Abscissa and ordinate of a polluting well:* the use of only one polluting well is contemplated. It is possible to make a superimposition of the effects of more calculations, calculated at the same time T with different points and starts of pollution.
- *Flow pollutant:* the flow should be defined in grams/second/metre in the case of a continuous or stationary

pollution, for instantaneous pollution it should be in gram/metre.

- *Kinetic porosity*: the kinetic porosity is a non-dimensional parameter comprised between 0 and 1 that represents the ratio between the mean effective flow and the speed according to Darcy, approximately equivalent to effective porosity; the latter represents the ratio between volume of water in an aquifer and the total amount of water in the sample. The kinetic porosity is a quite important parameter as the effective flow velocity is inversely proportional to it, according to the formula $v=ki/e$, where "v" is the velocity, "k" permeability and "e" the kinetic porosity.
- *Longitudinal dispersion*: the value is the ratio between the diffusion coefficient and the effective velocity. It is normally isotropic in respect to the direction of movement
- *Lateral dispersion*: the value is the ratio between the diffusion coefficient and the effective velocity. It is normally anisotropic in respect to the direction of movement
- *Immission duration*: duration, in days, of the pollutant. This parameter is used obviously only in case of instantaneous pollution or continuous pollution, while it is ignored in the case of stationary pollution.

Calculate Menu - Calculation Concentrations

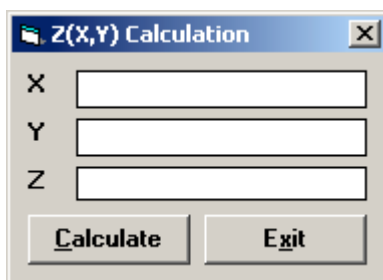
With this menu one can calculate the surface.

Execute Calculations Command

With this command the program executes the iso-concentration calculation. Use the print menu to view the results of the elaboration.

Z(X,Y) Calculation Command

With this command, one can evaluate the "z" value of any point of the surface; enter the coordinates of the point in the window and click the <Calculate> button.



The program calculates the required value using a bi-cubic splines interpolation algorithm, and displays the result in the "Z" field.

Volume Calculation Command

With this command, the programme calculates the volume (surface integral) of the whole grid, and shows it in a message box.

Print Menu - Calculation Concentrations

The Print menu is used for configuring the graphic output and for plotting the surface in form of Map, Wireframe View, or Solid View.

For more information, see the "Print Menu – ISOMAP – Grid Generation"